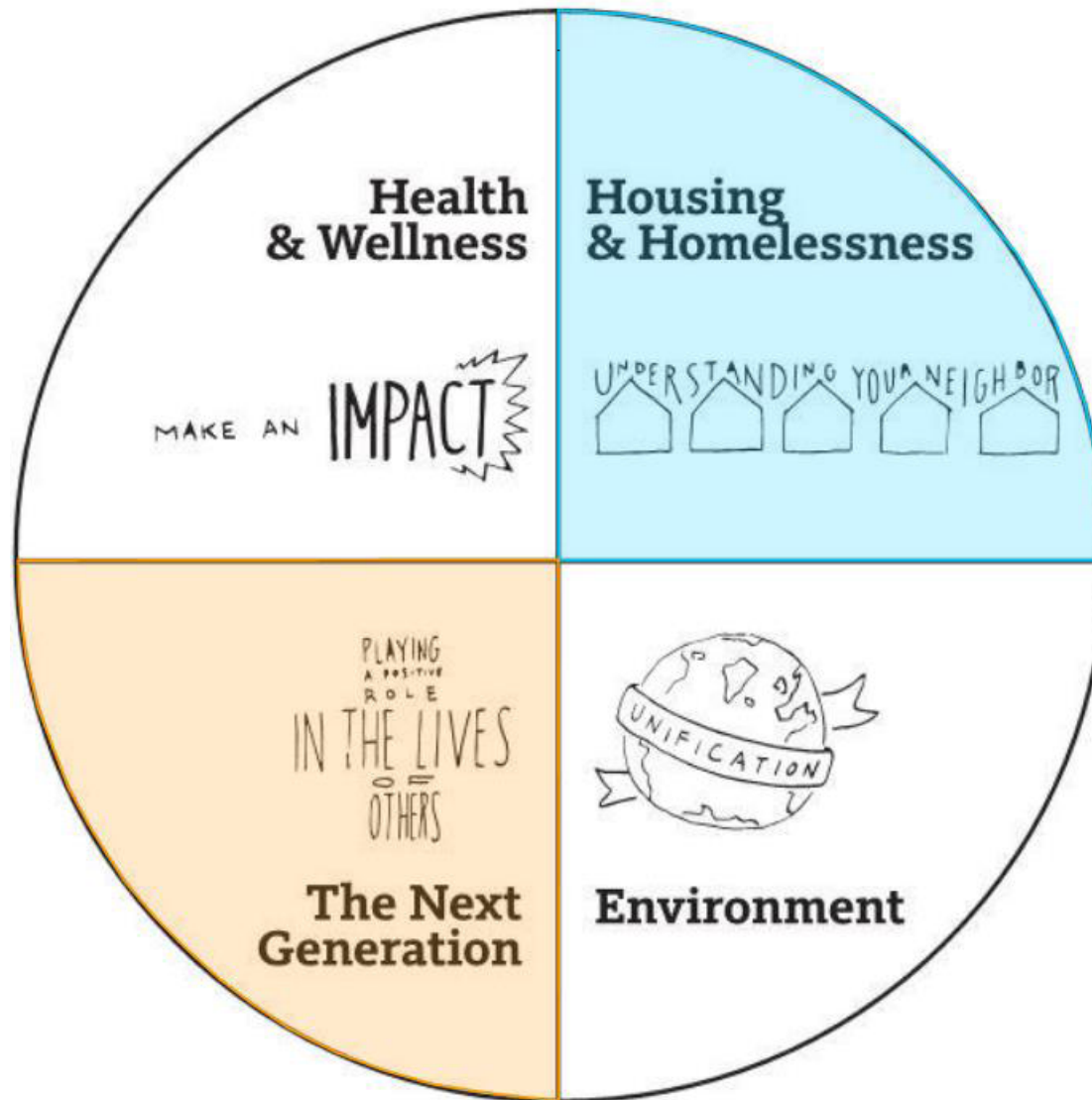




# COMMUNITY IMPACT

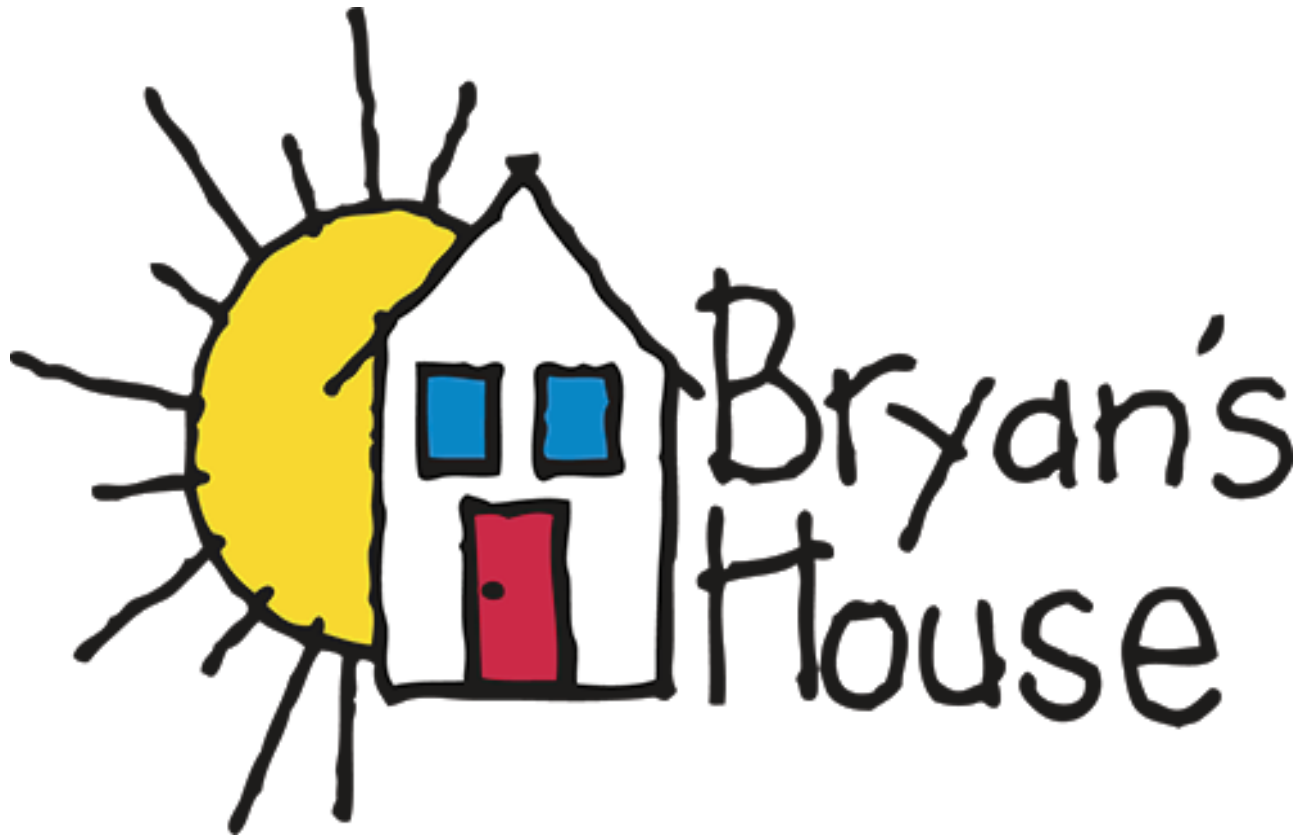




**Dallas | Houston | Austin | San Antonio**

**Community Impact Focus Areas**

**Bryan's House ProBono Project**



<b>Ryan Friend, President</b> <i>Liberty Capital Bank</i>	<b>Linda Hall, Past President</b> <i>Civic Leader</i>	<b>Donna German, 1st Vice President</b> <i>Civic Leader</i>			<b>Thomas Haskins Jr.</b> <i>Barnes &amp; Thornburg LLP</i>
<b>Homer Brown, 2nd Vice President</b> <i>L&amp;H CPAs and Advisors</i>	<b>Stuart Newsome, Secretary</b> <i>Neovia Logistics</i>	<b>Elizabeth Dacus, Treasurer</b> <i>IFS Industries</i>	<b>Kayla Marshall</b> <i>Lockheed Martin</i>	<b>Ryan McCuller</b> <i>UBS Wealth Management</i>	
<b>James Erwin</b> <i>Texas Bank &amp; Trust</i>	<b>Jessica Whitt Garner</b> <i>SMU Meadows School of the Arts</i>	<b>Ronnie Godbey</b> <i>UPS</i>	<b>Mercedes Owens</b> <i>Rise Nation</i>	<b>Jean Raub</b> <i>Civic Leader</i>	<b>Rust Ried</b> <i>Thompson &amp; Knight LLP</i>
			<b>Ken Sheffield</b> <i>Pioneer Natural Resources</i>	<b>Steven Upchurch</b> <i>Gensler</i>	<b>Debra Villareal</b> <i>Thompson &amp; Knight LLP</i>

## Organization Introduction



**Bryan's House Community Partners**



**Bryan's House Clinical Partners**





**97,668**  
HOURS  
CHILD  
DEVELOPMENT



**45,888**  
MEALS/  
SNACKS

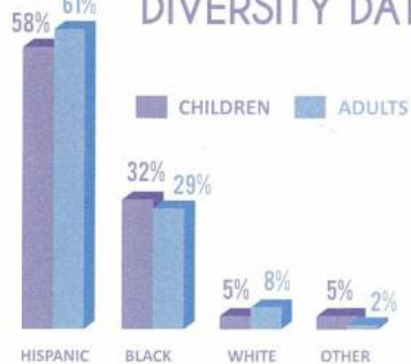


**2,304**  
ONSITE  
THERAPY  
SESSIONS



**11,472**  
CASE  
MANAGEMENT  
HOURS  
(ON AND OFFSITE)

## DIVERSITY DATA



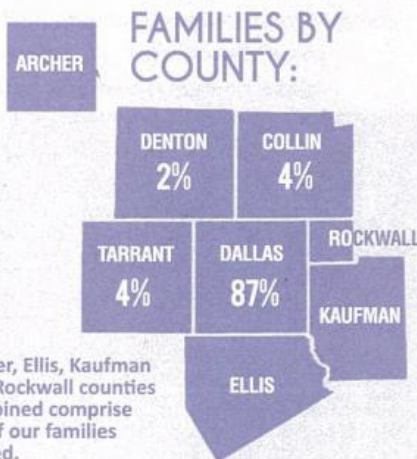
AVERAGE  
HOUSEHOLD  
INCOME: \$26,818

AVERAGE  
HOUSEHOLD  
SIZE: 3.72



## AREAS SERVED

**83** ZIPCODES **8** COUNTIES



## COLLABORATION + DATA



**47%** MEDICAL/THERAPY  
**33%** MENTAL HEALTH/SUBSTANCE ABUSE  
**18%** HOUSING/BASIC NEEDS ASSISTANCE  
**2%** TRANSPORTATION ASSISTANCE

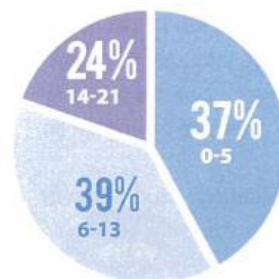


**500 VOLUNTEERS**

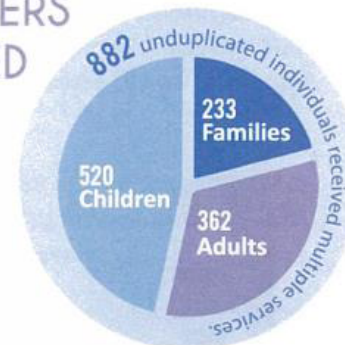


**9,263 HOURS WORKED!**

## CHILDREN SERVED BY AGE



## NUMBERS SERVED

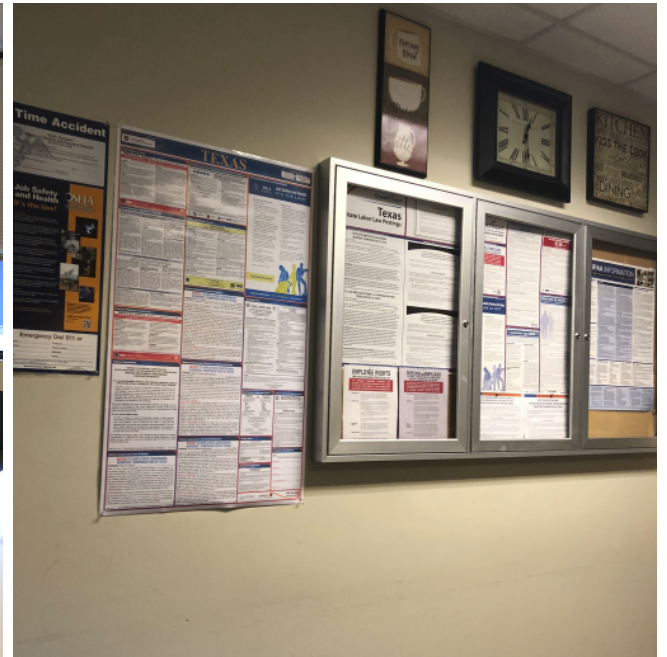


# Organization Statistics

## Reception/Lobby



## Break Room

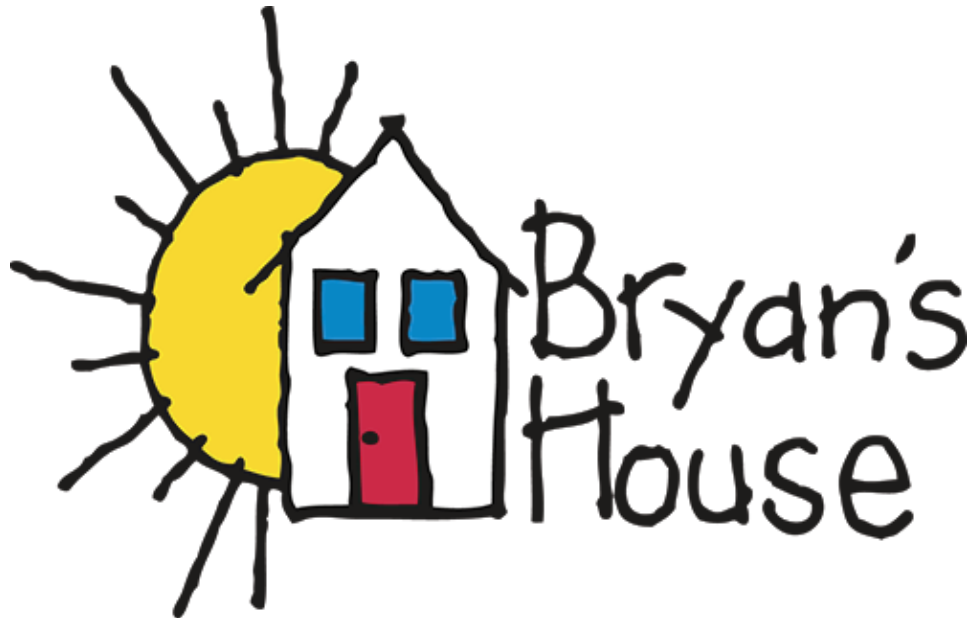


## Existing Facilities





## Bryan's House ProBono Project



### **Project Scope:**

1. Reception/Lobby:	475 SF - Renovation & Finish Out
2. Break Room:	225 SF - Renovation & Finish Out
3. IT/Storage:	200 SF - Finish Out
<b>TOTAL (approximate):</b>	<b>900 SF</b>

### **Estimated Gensler Hours:**

186

### **Ideal Project Team:**

Design Director, Architect, Interior Designer, FF&E Specialist, & Volunteer Design Team

### **General Contractor Ideas:**

Structure Tone contacted, other partners pending

### **Intern Involvement:**

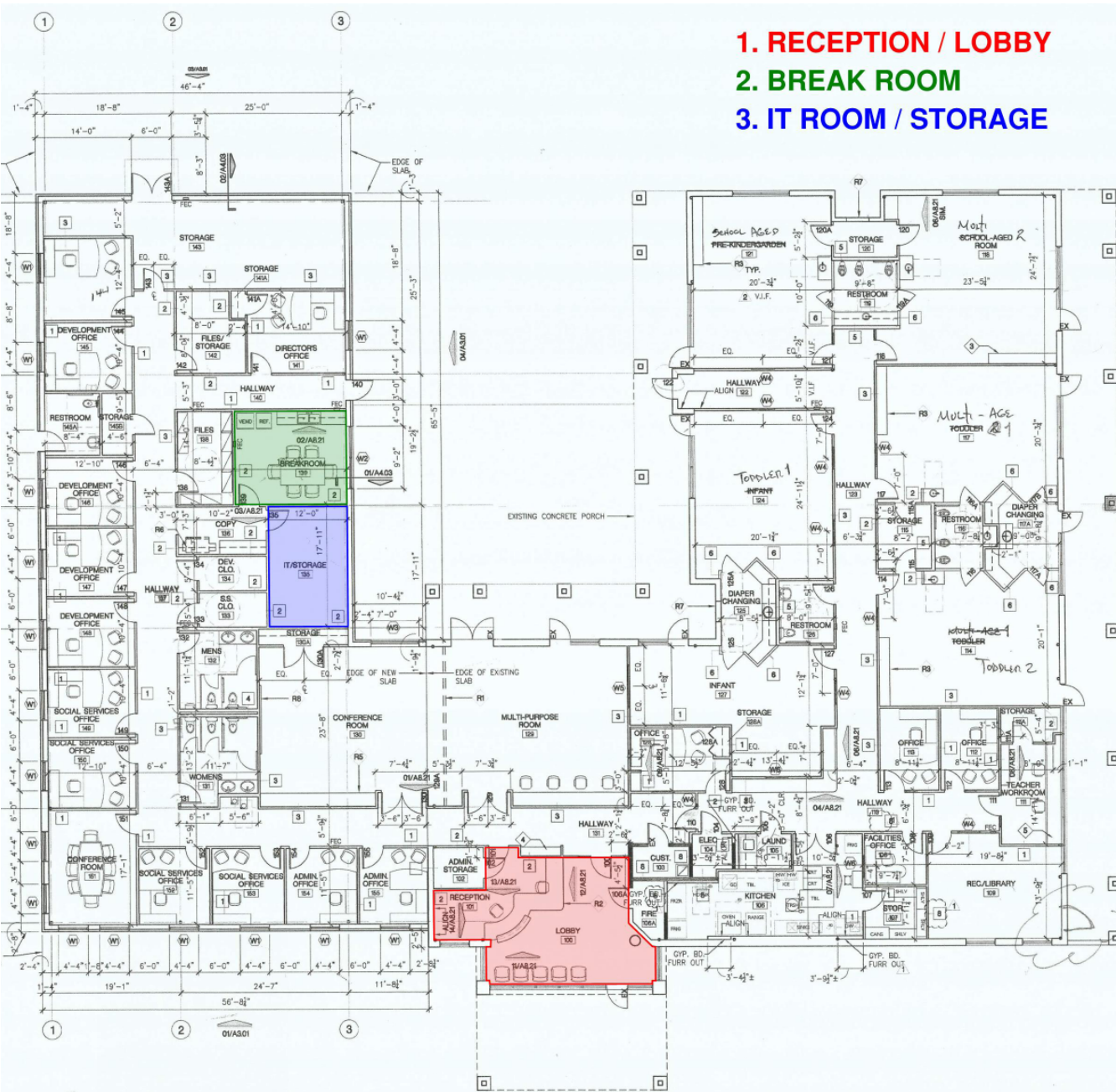
Opportunities to fill Class of 2019 availability



## **Project Information**

**Bryan's House ProBono Project**









\*Construction timeline subject to change pending Contractor's & Bryan's House's schedules

# Project Timeline



# COMMUNITY IMPACT

