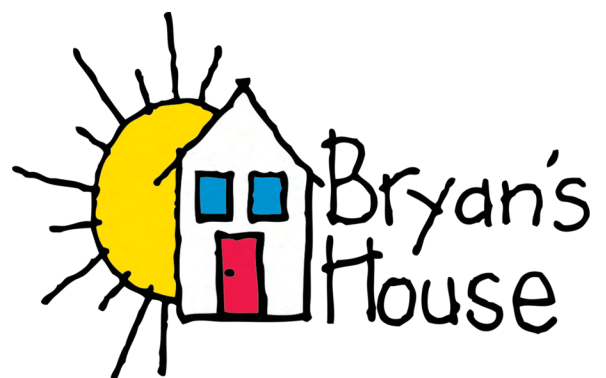




ANNUAL REPORT 2015-16



FROM OUR LEADERS



Dear Friends,

As we look back on 2016, many creative, wonderful ideas have taken root and bloomed into meaningful and successful projects and endeavors at Bryan's House. A change in leadership launched a new era at our much-beloved agency. Our staff is engaged, energized, motivated and growing. Moreover, the children in our care are making huge progress daily; that's the most important indicator that our new model is working. So much of our success is because of partners and friends like you.

Our top priority was to make sure that the quality and relevance of our programs and services were the very best our families could receive. To that end, we explored and implemented board diversification initiatives and introduced modern core programming and new, holistic approaches to care. Families with medically fragile children can easily end up homeless, especially in today's boom economy which raises rents precipitously. So we implemented an intensive program to help them become stable, including facilitating the complexities of public housing assistance, financial and employment counseling, and furnishing their households. We were keenly and collectively focused on our mission to reach the most chronically medically at-risk kids.

And with your help, we:

- Introduced a new "High Scope" curriculum which better serves the needs of our children who learn differently.
- Launched a new therapy model and a comprehensive service program in support of families.
- Launched our new website and branded the agency on new platforms and networks in May 2016, amplifying our voice and reinforcing our mission.
- Expanded our presence within the community, partnering with over 350 local and global companies, health care providers and hosting tours and events across DFW and beyond.
- Opened two new "Heroes" classrooms, specifically serving infants ages 0-18 months who are impacted or who were exposed to HIV/AIDS.
- Established an end-to-end housing stability support system.

89% OF FAMILIES HELPED IN THE FAMILY SUPPORTIVE SERVICES PROGRAM HAVE STABILIZED THEIR DAILY LIVES, AND ARE NOW THRIVING.

While we achieved a great deal together in 2016, our work is just beginning. We have developed a unique and modern medical-education-therapy model to anticipate and meet the needs of families and children with special needs. Looking ahead, we maintain our commitment to providing a more community-collaborative approach to serve our at-risk children with the most challenging medical, education and therapy needs. Our children face a range of physical and developmental challenges such as Cerebral Palsy, Lupus, Down Syndrome, Cancer, Autism, MS, ADHD, ADD, Acardi Syndrome, G-Tube Feeding, Heart Conditions, Leukemia, HIV/AIDS and hearing loss.

It is our privilege to serve these children ranging in ages from 0-5 for daily and after school direct onsite care, or in-home weekend or onsite respite care and camps from ages 6-21. Extending this model, when these kids leave at night, they go to a loving, warm, safe environment. With casework, we ensure that families have medical equipment and supplies they need, parenting and life skills training, and that all of their basic needs are met for a longer term of care (12 months minimum). We strive for long-term impact and success.

We are pleased to serve as a practicum site for students from The University of Texas at Dallas and The Dallas Nursing Institute. Our model is fast becoming something others want to learn more about. More and more often, we encounter those who wish to be a part of something progressive in the Special Needs, Therapy and HIV/AIDS Community. And we are committed to doing everything with excellence.

Thank you for sharing this journey with us.



Linda Hall
LINDA HALL
BOARD PRESIDENT



Lisa Genecov
LISA GENECOV
IMMEDIATE PAST-PRESIDENT



Abigail Erickson
ABIGAIL ERICKSON
CEO, BRYAN'S HOUSE

BOARD OF DIRECTORS

Linda Hall, President
Ryan Friend, Incoming President
Lisa Genecov, Past President
Donna German, 1st VP
Homer Brown, 2nd VP
Paul Riddle, Secretary
Elizabeth Dacus, Treasurer

Robin Brister
Brittany Dunn
Jessica Whitt Garner
Ronnie Godbey
Thomas Haskins, Jr.

Clay Hosterman
Rhonda Newman
Stuart Newsome
Jean Shakley Raub
Rust Reid

Ryan Scripps
Ken Sheffield
Tinsley Silcox
Steven Upchurch
Chad Wynn

ADVISORY BOARD

Ruth Sharp Altschuler
Kim Askew
Lori Bensing
Lottie Brodsky Ph. D.
Mae Brown
First Lady Laura Bush
Tom Caldwell
Ralph Cousins
Gloria Eppig

George Farr
Pam Gerber
Louise Griffeth
Nancy Halbreich
Helen Holman
Ted Ingersoll
Greg Istre, M.D.
Brian Jensen
Bill Keslar

Matrice Ellis Kirk
George McClesky
John McFarland
Kendra Miller
Cyndy Monie
Nancy Perot Mulford
Pat Prestidge
Lyn Roberts
Mary Ann Siller



FOUNDING ADVISORS:

Robin Brister
Brittany Dunn
Jessica Whitt Garner
Lisa Genecov
Stefanie Held
Sarah Losinger
Troy McCuller

Dotti Reeder
Billie Leigh Rippey
Nancy Roe
Rhonda Sargent-Chambers
Carol Seay
D'Andra Simmons
Jimmy Westcott
Kay Wood

FOUNDING ADVISORS:

Rick Chabot
Charles Collins
Joseph Collins
Justin Collins
Michael Doak

Jon Douglas
Maurice Ellison
James Erwin
Shea Mercer
Jason Wingert
Chad Wynn

OUR MISSION:

To respond to the needs of children and their families by providing medically managed child care, respite care and community-based, family-centered support services.

We accomplish our mission through two umbrella programs:

1) DIRECT ONSITE CHILD CARE integrates on-site nursing with high-quality education, therapy, and developmental care geared to each child's needs:



EARLY CHILDHOOD EDUCATION PROGRAM

- Serves medically at-risk children ages 0-5.
- Open Monday-Friday 6 am - 7 pm.

RESPITE CARE

- Serves special needs children ages 0-13.
- Provides relief for parents and caregivers.
- Offered two Saturdays a month.

AFTER-SCHOOL, SUMMER AND HOLIDAY PROGRAMS

- Serves medically at-risk children ages 0-13.
- Provide learning, developmental, and recreational activities according to ability.

COLLABORATIVE THERAPY

- Is a therapeutic bridge between classroom and home.

ASSESS

- Mental health.
- Substance abuse.
- Financial stability.
- Educational needs.
- Physical & social needs.
- Daily living skills.
- Capacity for self sufficiency.
- Housing stability.

EDUCATE

- Parenting skills.
- Emergency preparedness.
- Financial literacy.
- Family advocacy.
- Systems navigation (healthcare, education, legal, etc.).
- Mentoring & modeling behavior.
- Employment stability.

ASSIST

- Goal setting (financial, educational, medical, personal growth).
- Budgeting.
- Crisis prevention planning.
- Facilitate securing stable housing.
- Transition planning for youth with special needs entering adulthood (medical, educational, legal).

CONNECT

- Job training.
- Healthcare & therapy services.
- Legal services.
- Resource providers to meet basic needs (food/clothing/shelter/stable housing).
- Serve as liaisons between the agency, client, and the community.

PROVIDE

- Healthcare and housing coordination.
- Crisis intervention.
- Emergency financial assistance.
- Networking opportunities for clients.
- Distribution of donated goods (clothing, household items, gifts, school supplies).

COORDINATE

- Community outreach and recruitment events to promote agency services and increase client population.
- Public and media campaigns for presentations about the agency, etc.

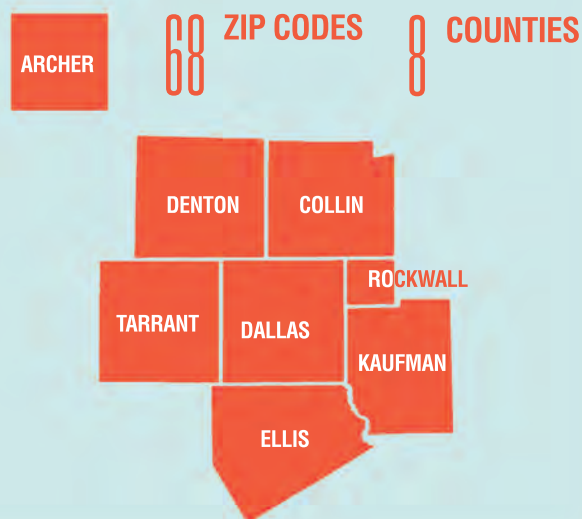
2) OFF SITE MEDICALLY INTEGRATED FAMILY SUPPORT SERVICES (FSS) provides individualized strategic intervention and planning designed to promote increased knowledge, skills and behaviors that will enable families with special-needs children to manage emergencies, sustain basic needs, achieve their goals and expand their opportunities for long-term success.

Bryan's House currently serves families with special needs children or who are impacted by HIV/AIDS from 68 zip codes and eight counties across our community.

IMPACT REPORT

2015-2016

AREAS SERVED



58% HOUSING ASSISTANCE

26% MENTAL HEALTH/
SUBSTANCE ABUSE

16% MEDICAL AND/OR
OTHER HEALTH
AGENCIES
(THERAPIES, ETC.)

16% TRANSPORTATION
ASSISTANCE



HOUSING/FAMILY SUPPORT SERVICES



90% FAMILIES REACHING 80% OR MORE
OF THEIR GOALS



84% FAMILIES GRADUATING/LEAVING
THE PROGRAM WITH A JOB OR
STEADY INCOME



94% GRADUATING FAMILIES WHO
REMAIN SELF-SUFFICIENT

576 VOLUNTEERS PROVIDED THEIR TIME, TALENT AND SKILLS.



8,411 VOLUNTEER
HOURS WORKED

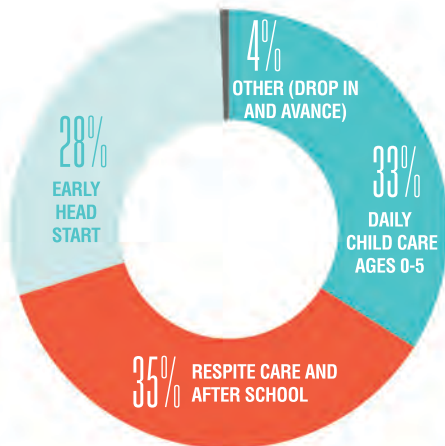
NUMBERS SERVED

JULY 1, 2015 - JUNE 30, 2016

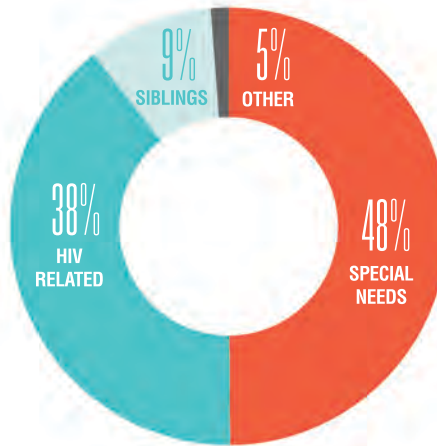
NUMBER OF FAMILIES.....	233
NUMBER OF ADULTS.....	348
NUMBER OF CHILDREN.....	519
TOTAL SERVED.....	867



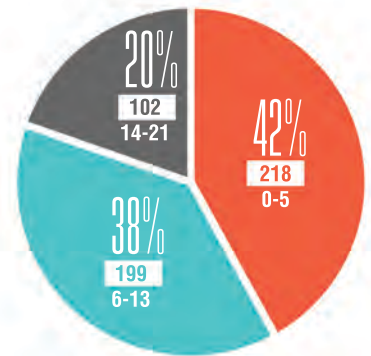
CHILDREN SERVED IN CHILDCARE



DAILY CHILD CARE POPULATION (AGES 0-5)



CHILDREN SERVED BY AGE



FAMILIES BY COUNTY

DALLAS.....	87%
TARRANT.....	4%
COLLIN.....	3%
DENTON.....	2%
OTHER.....	4%

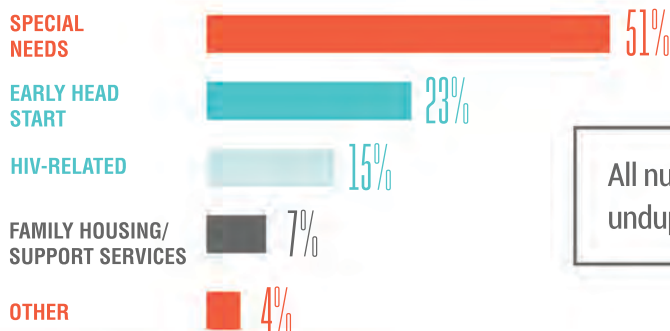
SPECIAL NEEDS.....	31
HIV-RELATED.....	24
SIBLINGS.....	6
OTHER.....	3
TOTAL DAILY CHILDCARE SERVED.....	64

OUR FAMILIES



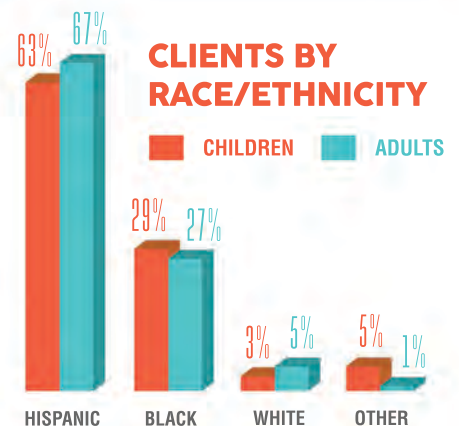
AVERAGE HOUSEHOLD INCOME: \$26,688
AVERAGE HOUSEHOLD SIZE: 3.78

FAMILIES BY PROGRAM



All numbers discrete, unduplicated.

CLIENTS BY RACE/ETHNICITY



SOURCES & USES OF INCOME

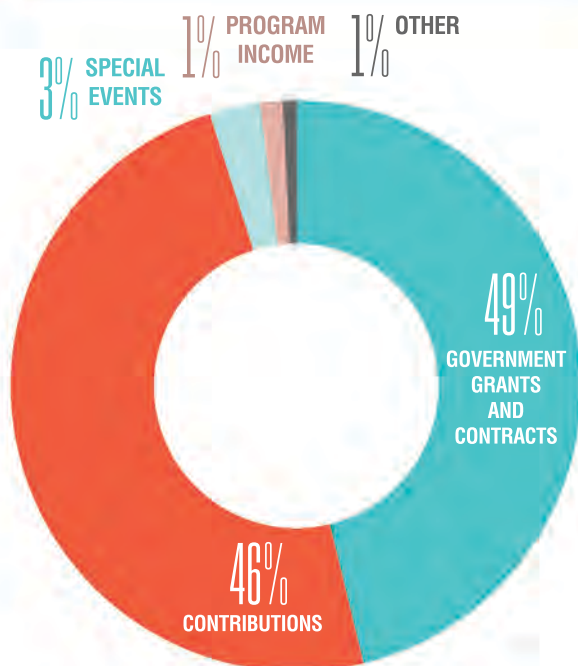
FINANCIAL SUMMARY: JULY 1, 2015 - JUNE 30, 2016

Bryan's House is committed to the highest standards of stewardship of the resources and the trust of its donors. Based on financials from the fiscal year 2016 we are striving to reduce expenses in 2017 by more than 30%. We have also exponentially expanded our funding efforts to meet Fiscal 2017 goals.

REVENUES

Contributions.....	\$833,952
Government Grants & Contracts.....	881,893
Special Events.....	53,089
Program Income.....	22,791
Other.....	13,195

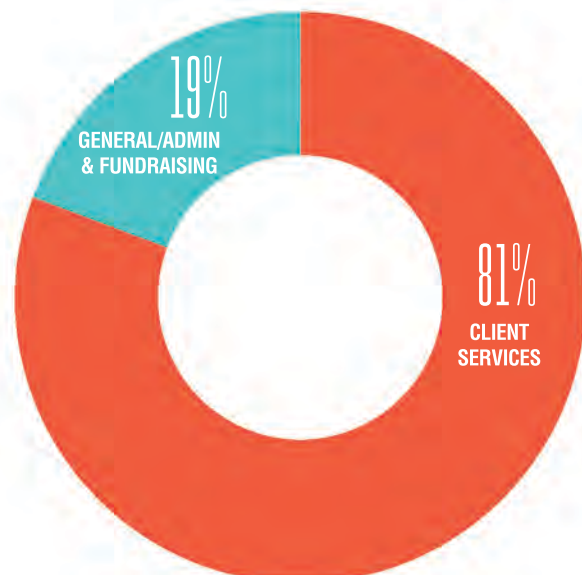
TOTAL **\$1,804,920**



EXPENDITURES

Programs.....	\$1,949,591
General/Administrative.....	466,067

TOTAL **\$2,415,658**



CHILD DIAGNOSIS

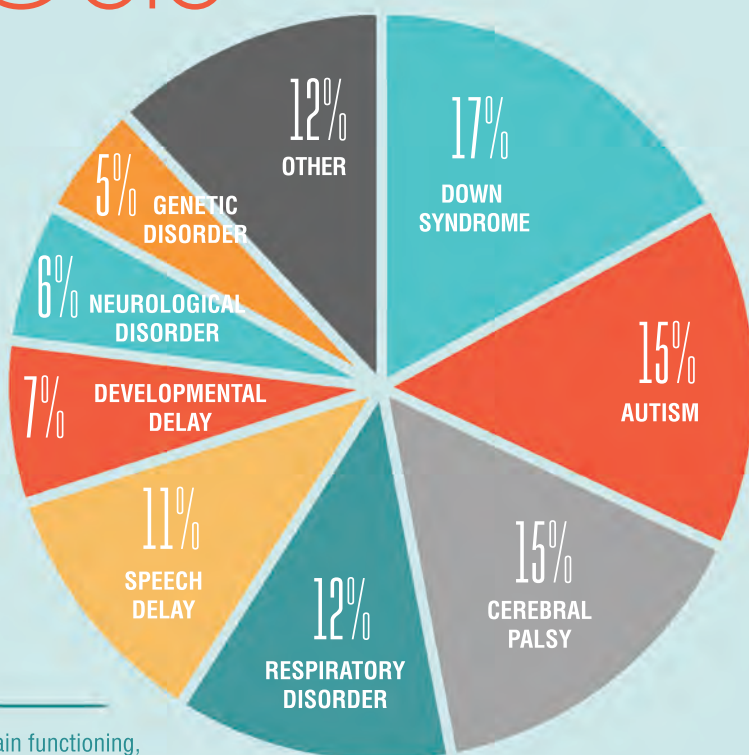
HIV/AIDS Impact

Agency-wide, there are 26 families impacted by HIV/Aids. This makes up 31% of children in on-site direct child care. 70% of on-site children impacted by HIV/Aids were found to have undiagnosed developmental delays.

DISABILITIES AND DELAYS

- Down Syndrome
- Autism
- Cerebral Palsy
- Respiratory Disorder
- Speech Delay
- Developmental Delay
- Neurological Disorder
- Genetic Disorders*
- Hematological Disorder
- Craniofacial Disorder
- Cancer (various types)
- Endocrine Disorder
- ADHD
- Autoimmune Disease
- Cardiovascular Disorder

*Includes impairments to growth, brain functioning, and musculoskeletal system



WHAT WE DO WELL



STAFF PROFILE

DALIA TORREZ, RN, resident site nurse at Bryan's House, knows exactly why she loves her job. "Because the children I spend time with every day – infants, toddlers, and school-age kids – are thriving, and they would not be if it were not for Bryan's House."

She adds, "What we do here at Bryan's House is unique among agencies that help children with special medical needs, often an array of them. The result is children who are happy and transformed, because of how we provide the necessary combination of services."

"Our children often have very complex medical needs, so we work with their doctors, case workers and parents, bringing them all together so that the children achieve goals that pace to their unique medical, educational and therapy situation."

Dalia focuses on the child's whole needs. She asks herself, "Are the children I see going home to safe, loving environments?"

Do their parents need parenting classes? Do they need training in feeding their child or administering medicine? What about other financial or support resources their parents might need?" She knows that the family's need impacts the child, so she makes sure to take a holistic view.

Bryan's House has a highly progressive nursing program, providing practicum classes to students from several nursing schools in the DFW area, including the Dallas Nursing Institute. Every day these nursing students are in Bryan's House classrooms and on the playground, observing the care the children receive. Care can include everything from annual wellness checks to daily feedings for those kids with G-tubes, or those who have come off chemo, have brain injuries or complex heart, autism or speech impairments.

DALIA SAYS, "THIS IS A MAGICAL PLACE TO WORK. I KNOW I AM IMPACTING LIVES FOR A LIFETIME! THAT'S WHY I THINK WE EARN – AND CERTAINLY NEED – THE SUPPORT OF THE MEDICAL COMMUNITY AND CITY TO CONTINUE OUR VITAL WORK."



Dalia Torrez, RN and a friend at Bryan's House.

NEW THERAPY MODEL

SARA BESSETTE OF BRYAN'S HOUSE TALKS ABOUT EXCITING NEW DEVELOPMENTS IN EARLY CHILDHOOD EDUCATION

SARA BESSETTE, M.S., has been in the field of early childhood education and development for almost seven years, and therapeutic services for almost five years. She came to Bryan's House in late 2016 to work on developing a new therapy model with CEO Abigail Erickson. Sarah says, "Research shows that early intervention in speech, motor, and socio-emotional skills have a long-lasting impact on children academically, as well as relationally. Throughout the nation, we have seen programs that focus solely on medical or educational needs. Bryan's House was already combining medical and educational services; therapy services were the only missing piece to creating a holistic family-centered model."

Rather than have families, referral sources and other agencies search to find therapy that works over the long term; especially with children who have a vast array of special needs, Bryan's House is providing those combined services daily, for each child on site. "Bryan's House is partnering with agencies that accept a wide array of insurances and have best practices. If a family has no insurance or is unable to pay, the agency introduces low to no-cost alternatives," said Sara.

Sara stated, "We are working on bringing in additional partners, information and research on early identification of Autism with Johns Hopkins Department of Mental Health. By the summer, we will begin working toward providing mental health services for children and their families, including child-centered play therapy."



Sara Bessette, M.S., and a friend at Bryan's House.

Bryan's House leadership is creating a model that serves the whole child and the whole family, holistically. At Bryan's House, the children and families won't have to go to five different places to get what they need. A child who needs feedings from a qualified nurse and access to the best speech therapy practices can come to Bryan's House. If that child's family is struggling to find housing, a job or a stable family life, they can come here to get the help they need for the long term. Those children who get all those services here will also receive a high quality education that will prepare them for kindergarten and beyond.

"This is why I love Bryan's House and why I am so excited to help it grow," said Sara. "We have so many modern and progressive ideas to explore and work towards in 2017. Our teachers are ready to learn more themselves, our social services team is constantly working in 68 zip codes with 233 families to access resources, and our administrative team works to raise awareness, bring in support and take care of our amazing staff. Bryan's House is a family and every person who walks through our doors is loved, cherished and supported. I get to see that every day."

DONOR PROFILE:

RHONDA SARGENT CHAMBERS

“While I’ve led a fortunate life, I don’t believe anything outside my family has given me as much satisfaction as our work in support of Bryan’s House,” says Rhonda Sargent Chambers.

“To be able to quietly save lives of infants and children and relieve families’ desperate worries is so incredibly rewarding.”

Rhonda, founder of RSC Show Productions, is familiar to many as a respected figure in the fashion, event production and fundraising community for 30-some years. She has been a stalwart supporter of Bryan’s House through her active participation in DIFFA (Design Industries Foundation Fighting Aids) since the earliest days of DIFFA in the 1980s.

“Back then,” Rhonda recalls, “in those terrifying days of the AIDS epidemic, many babies didn’t make it. It was heartbreaking. The disease took them, but we carried on, and while AIDS is not eradicated, we know our work is meaningful and has made a huge difference, and we continue to serve those living with AIDS through the fine work they do at Bryan’s House.”

In 1988, it was DIFFA’s \$5,000 seed money grant that helped launch Bryan’s House by providing a space for AIDS-stricken infants, whose mothers were too sick to care for them, to receive 24/7 love, care, and support. Over the years, DIFFA has donated over \$276,000 to Bryan’s House, thanks in large part to annual events produced by Rhonda and her colleagues and friends.

Says Rhonda, “Every year, hundreds of people work hard and selflessly to bring an extraordinary event and experience to life, all to raise awareness of the great need that still continues today and to fund the vital programs like those of Bryan’s House.”

“It has been such a joy to serve with DIFFA, to help fund Bryan’s House.”

Not content to raise valuable resources for Bryan’s House, Rhonda also personally provides her time, energy and quiet gifts to Bryan’s House. In late 2016, she agreed to serve as a founding member of the Jubilee Society of Bryan’s House. This society of only 500 members was established to provide 10 hours per volunteer member a year, with membership fees going directly to the agency’s Heroes Program which enables the agency to provide infants with individualized therapies by funding training and classroom equipment.

Rhonda is also an Advisory Board Member for The Art Institute and TCU’s Fashion Merchandising programs as well as a Board Member for The Elisa Project. Along with her husband of twenty-six years, their house is a busy one with two teenage sons.

Bryan’s House board, families and staff salute Rhonda for her unstinting, meaningful and moving work on behalf of Bryan’s House infants and families.



SUCCESS STORIES

THE NUEVA FAMILY was at risk of losing their home when they came to Bryan's House. Their five year old son Jason was born with spina bifida and requires constant medical attention. Through our Family Support Services Program, Bryan's House was able to transition the family into stable housing.

Their case manager assisted them in securing food for the holidays, helped them develop a working budget and Jason was given a brand new bed and mattress for Christmas thanks to our generous Adopt-a-Family donors. The family also has access to our monthly Respite Care—where Jason and his two year old sister receive medically managed child care.



IN ANOTHER STORY that makes the heart ache, we were alerted to a family (husband, wife, middle school son, and baby). The baby had significant special needs, which is an incredible stressor on marriages. The father committed suicide and the mother and the two children were forced to live in a relative's garage (not a garage apartment – just a dirt-floor shelter) without a bed or household goods – just a hot plate. Bryan's House volunteers stepped in immediately with beds and other household goods for the family. We then initiated them into the process to secure public housing, and began supporting them with the baby's medical needs and the mother's financial and employment needs. Today, the family is in secure subsidized housing, the baby is receiving specialized medical treatment, and the middle school child is prospering amidst all this love and care.

THE BRYAN'S HOUSE CONTINUUM OF CARE

Social services, clinical and educational teams work together for our children with special medical needs.



OUR DONORS

JUNE 1, 2015- JULY 31, 2016

\$50,000 AND OVER

George & Fay Young Foundation
The Rees-Jones Foundation
Harold Simmons Foundation
Anonymous Gift
Anonymous Gift

\$10,000 TO \$49,999

Anonymous Gift
Harry W. Bass, Jr. Foundation
Mr. and Mrs. Chad Brister
Communities Foundation of Texas
The Dallas Foundation
Dallas Women's Foundation
David M Crowley Foundation
DIFFA National Office
Fidelity Charitable Gift
Drs. David and Lisa Genecov
IME Becas
J L Williams Foundation
Mr. and Mrs. Lance Leslie
Liberty Mutual Foundation
Lonestar Charity
The Moody Foundation
The Moozie Foundation
Orix Foundation
Mr. and Mrs. Ken Sheffield
Sturgis Charitable Trust Foundation
United Way of Metropolitan Dallas
The Woodall Foundation

\$5,000 TO \$9,999

Mr. Jeffrey Bridges
Broadway Cares Equity Fights AIDS
Mr. and Mrs. Robert Hall
Hunt Cares Employee Golf Tournament
Ms. Stuart Newsome
The Ralph and Genevieve B. Horween Foundation
Mr. and Mrs. Allen A. Raub
The TJX Foundation
The Women of Saint Michael

\$1,000 TO \$4,999

Anonymous Gift
Mr. and Mrs. William Baker
Bank of America United Way Campaign
Barnes & Thornburgh
Mr. Michael Brookshire
Mr. Homer Brown
Mr. and Mrs. Russell Budd
Mr. and Mrs. John Caffey
Canyon Creek Presbyterian Church
Mr. Jeffrey Clay
Mr. Regent L. Cornell
Mr. and Mrs. Walter Crum
Mr. David Douglas
Ms. Carol Gantt
Ms. Donna German
Mr. Derek Gerow
Goldman Sachs & Co
Mr. Perry Gragg
Mrs. Kathy Greenough
Mrs. Louise S. Griffeth
Mr. Jerry Hammon
Mr. Jonathan Hanson
Ms. Lydia Hill
Mr. William Horn
Mr. and Mrs. Frank T. Hundley
Ms. Patricia Hyde
The Hyde Foundation
The Inge Foundation
Insurance Industry Charitable Foundation
Mr. JW Irvin
Mr. Daniel Kuzmic
Mr. James Mattingly
Merit Energy Associates
Mr. David Munson
Dr. and Mrs. Thomas Newsome
Ms. Nancy Perot
Mrs. Margot Perot
Mrs. Michelle Pike
Prosperity Bank
Mr. and Mrs. Rust E. Reid
Mr. Alec Renfro
Mrs. Nancy Roe

\$1,000 TO \$4,999 (CONT.)

Safeway Inc
Mr. David Schmidt
Tankersley Family Fund
Mr. John Tauscher
Mrs. Abigail Torres
UBS Financial Services
Mr. and Mrs. Jon Venetos
Westdale Asset Management
Mr. Paul Williamson
Mr. Christopher Williamson
Mr. Robert Wong
Young Risk Management Association

\$500 TO \$999

Adolfson & Peterson Construction
Ms. Jennifer Alexander
Anonymous Gift
Avita Pharmacy
Mr. Karl Bach
Ben Washington Baptist Church
Cathedral of Light Church
Ms. Julie Cellucci
Mr. Tim Chancey
Charity Golf International
Mr. and Mrs. Scott Cohen
Ms. Elinor Crews
Mr. and Mrs. Cullen Cullers
Dr. Jennifer Cuthbert
Ms. Lee Morris Davenport
Ms. Holland Finley
Mrs. Margie Frank
Mr. and Mrs. Ryan D. Friend
Mr. Tommy Fulford
Galilee Griggs Association
Ms. Jessica Whitt Garner
Mr. and Mrs. Gil Glover
Mr. and Mrs. David Graves
Hailstone Insurance
Mr. Thomas Haskins Jr.
Mr. Curt Hefner
Holy Cross Catholic Church
Mr. and Mrs. David Hundley
IBM Corporation
Kurz Group
Ms. Margaret Langteau
Mr. Charles Lloyd

OUR DONORS

JUNE 1, 2015- JULY 31, 2016

\$500 TO \$999 (CONT.)

Mr. John Long
Ms. Pam Gerber and Ms. Suzanne Slonim
Pepsico Foundation
Plymouth Park Methodist Church
Ms. Latifah Raoof-Valcic
Regions Bank
Mr. and Mrs. Edward E. Robbs
Mr. Blake Robinson
Mr. Antonio Rocha
Ms. Betty Sanders
Mrs. Deborah Scripps
Mr. Tinsley Silcox
Mr. and Mrs. Gary Weed
Dr. Paula Williamson
Worldpass Travel Group

\$1 TO \$499

Ms. Alice Adams
Ms. Dawn Adcock
Mr. Christopher Adcox
AFLAC
Ms. Marissa Ain
Mr. Jason Alcantara
Mrs. Marlene Alexander
Mr. Michael Allan
Mr. J.C. Allen
Mr. Mike Allen
Alphagraphics - Park Cities
Amazon
Mr. Allan Amerine
Ms. Chelsea Anderson
Ms. Luedella G. Andrews
Anonymous Gift
Anonymous Gift
Anonymous Gift
Anonymous Gift
Mr. Mario Aranda
Mrs. Jaime Badoni
Ms. Judy Baergen
Mr. John Bailey
Mr. and Mrs. Arzell Ball
Ms. Ashly Ballesteros

\$1 TO \$499 (CONT.)

Ms. Diana Bandol
Mr. Greg Barham
Mr. Sunita Barka
Mr. Lon Barrera
Mr. Matthew Barron
Mr. Bo Bartlett
Mr. Scott Bary
BBVA Compass Bank
Mr. Kenny Bergstrom
Mr. Jose Bernal
Mr. Justin Bernil
Ms. Pamela Lynn Berry
Bethany Baptist Church
Mr. Todd Bishop
Mrs. Dorlisa Blackburn
Mr. Donovan Blakeley
Mr. Rex Blazeovich
Mr. Victor Bloede
Mr. and Mrs. Thomas Boehmer
Ms. Mary Boggs
Ms. Charlotte Booth
Mr. Isiah Booth
Mr. Justin Bowers
Ms. Fannie M. Bradford
Mrs. Cassandra Bradford
Mr. Larry Donnell Bradford
Mr. Clifton Bradford
Mr. Jonathan Bradley
Mr. Richard Bradley
Mr. B Brantley
Mr. Miguel Breceda
Ms. Kara Bricker
Mr. Eric Bricker
Mr. Brady Britten
Mr. Ben Britten
Mr. and Mrs. Crawford Brock
Mr. James Brown
Ms. Nancy Brown
Mr. and Mrs. Fred C. Brown
Mr. Scott Brown
Ms. Danielle Brown
Ms. Laree Bryant

\$1 TO \$499 (CONT.)

Mr. and Mrs. James Bullock
Mr. William Bundy
Mr. and Mrs. Larry W Burgess
Mr. Landon Burke
Mr. Kris Burks
Mrs. Pamela Burnley
Mr. John Buskirk
Mr. Greg Bussey
BW Group Inc
Mr. Tom Caldwell
Dr. Barbara Cambridge
Mr. Fabian Campos
Ms. Tracy Carman
Mr. John Castenada
Ms. Melissa Cavazos
Central Lutheran Church
Mr. Alex Chalford
Mr. Stephen Chapman
Mrs. Barbara Christian
Ms. Latricia Cleveland
Mr. Luis Collie
Ms. Cynthia Colocousis
Mr. Dylan Connell
Mr. and Mrs. George Conway
Mr. John Cook
Mr. Darin Cooley
Mr. and Mrs. Thomas Cooper
Mr. J. Coover
Mr. William Coppeler
Mr. Federico Cornejo
Mr. James Couzelis
Mr. Adam Cox
Mrs. Ethel Crawford
Mr. and Mrs. Dan Cullum
Ms. Elizabeth Dacus
Dallas Assoc of Health
Underwriters
Dallas County Master Gardener
Dallas Jewish Community
Foundation
Dallas Lace Society
Ms. Sue Dalton

OUR DONORS

JUNE 1, 2015- JULY 31, 2016

\$1 TO \$499 (CONT.)

Mr. Matthew Daniel
Mr. Ben D'Avanza
Mr. Kris Davis
Mr. Gary Davis
Ms. Lisa Dawson
Ms. Linda Deters
The Dierks Family
Ms. Diana Dinh
Ms. Paula Doll
Mrs. Corinne Donica
Ms. Helen Dorsey
Ms. Nika Duan
Mr. Chad Duncan
Mr. Mark Dunn
Mr. Stephen Dunn
Ms. Effie M. Durgin
Ms. Suzanne Dyer
Mr. Kevin Early
Mr. Nathan Eaton Jr.
Mr. Jimmy Edwards
Mr. Luther Ellison
Mr. Brian Erickson
Mr. Bill Escanlar
Mrs. Kimberly Ewell
H & D Family
Ms. Deborah Feir
Mr. Michael Fink
Dr. and Mrs. Ross Finkelman
Dr. Maureen Finnegan
First Christian Church
Ms. Lara Fischer
Mr. Robert Fisher
Ms. Mary Fleming
Mr. Joe Foster
Ms. Suzanna Fox
Mrs. Margie Francis
Ms. Paysy Frederiksen
Ms. Lyn Freeman
Mr. Robert Fulford
Mr. and Mrs. Jack Furlong
Ms. Jane Gaines
Ms. Cecelia Gannon
Ms. Mary Garner
Mr. and Mrs. Ab Gass

Mr. and Mrs. Joe Gautreaux
Mrs. Sally Genecov
Dr. and Mrs. Jeffrey Genecov
Mr. Mike Geng
Mr. Blake German
Mr. Bryan Gerold
Mr. Louis Giamalva
Mr. William Gilliam
Give With Liberty
Mr. Peter Godat
Mr. Stanton Goldman
Ms. Jennifer Golightly
Mr. and Mrs. Richard Goode
Ms. Margaret Goodman
Mr. Zachary Gostomski White
Ms. Lula Goswick
Ms. Jill Gragg
Mr. Billie Graham
Mr. and Mrs. Sonnie Greer
Mr. Randall Greg
Mr. Kurt Grichel
Mr. Scott Griesser
Mr. Grant Griffin
Ms. Wendy Griffiths
Mr. Robert Grimes
Ms. Carissa Grisham
Ms. Irina Gromova
Mr. Eduardo Gutierrez
Ms. Susan Hackett
Mr. Christopher Hagge
Ms. Lynn Hailstone
Mr. Thomas Hale
Mr. Les Hall
Ms. Andrea Hall
Ms. Stephanie Ham
Mrs. Marian Hammert
Mr. Kirk Hampton
Mrs. Susan Hanlon
Mr. Brooks Hanson
Ms. Marianne Harmon
Mr. Jason Harpole
Mr. and Mrs. Thomas Haskins
Ms. Elizabeth Haskins
Ms. Amanda Hateway
Mr. Michael Hayden

Ms. Mildred Hays
Mr. and Mrs. William Hayward
Mr. Vance Hazzard
Ms. Katherine Heick
Ms. Judith Heike
Ms. Vicki Helms
Ms. Shannon Hendricks
Mr. Justin Henry
Mr. Shawn Henry
Mr. Randal Hering
Ms. Julie Hersh
Mr. Richard Hershey
Mr. Jim Hester
Ms. Mary Beth Hilburn
Ms. Kay Hill
Mr. Stu Hill
Hillco Insurance
Ms. Jonnita Hilton
Ms. Mary Huch
Mr. Patrick Hudson
Mr. James Hughes
Mr. Jeremy Hughes
Hunt Consolidated
Ms. Jannina Iglehart Johnson
Mr. Rocio Ildemaro
Imagine Nation Books Ltd
Mr. and Mrs. T.L. Inama
Innovative Direct Media
Dr. and Mrs. Gregory Istre
Ms. Karen R. Ivory
Mr. Todd Jackson
Mr. Mike Jackson
Mr. Andrew James
Ms. Kelli Jeffrey
Mr. Coleman Jerome
Ms. Angela Johnson
Mrs. Maxine Johnson
Ms. Barbara Johnson
Ms. Bonnie Johnston
Mr. Robert Casey Jones
Mr. Steve Jordan
Mr. and Mrs. Frank Jordan III
Mr. Alan Josephson
Ms. Susan Kagan
Mr. Rajaram Kasarla

Mr. Dean Kazanas
Ms. Elizabeth Keller
Mr. Steven Kennington II
Mr. Corey Kent
Mrs. Sedonia Kidd
Mr. Brent Kimball
Ms. Jennifer Kimberlin
Ms. Marcie Kirkpatrick
Ms. Marcie Kirkpatrick
Mr. Steve Klimacek
Mr. Dan Koh
Ms. Arlena Kramer
Mr. Marshall Krumm
Ms. Holly Kuper
Mr. David Kurtz
Ms. A.J. Lacroix
Mr. Harvey Ladd
Mr. and Mrs. Anita Lagemann
Mr. Wesley Lasater
Ms. Gayle Lawson
Mr. and Mrs. Roberta Lazarus
Ms. Brandy Lewis
Ms. Samantha Liles
Mrs. Eleanor Lindsay
Ms. Joann Listi
Rev. Samuel Littlejohn
Ms. Alberta Lloyd
Mrs. Janis Loegering
Mr. Jerry Lohbauer
Mr. Matthew Louzau
Mrs. Kelly Love
Ms. Sandra Lowe
Mr. and Mrs. Charles Luedeker
Mr. Brian Lumpkin
Mrs. Florence Madison
Ms. Lori Maguire
Mr. Daniel Mahaffey
Mr. Christopher Mahon
Ms. Deirdre Malone
Mr. Nils Marchand
Mr. Chad Marshall
Mr. Michael Marshall
Mr. James Martin
Ms. Margaret Martinez
Mr. Mike Martinez

OUR DONORS

JUNE 1, 2015- JULY 31, 2016

\$1 TO \$499 (CONT.)

Mr. Yusnier Valle Martinez
Mr. and Mrs. Farooq Marzook
Ms. Allison Matalone
Ms. Heather McCabe
Mr. Lenny McCall
Rev. Wendy McConney
Mrs. Exie McGee
Mr. Dennis McKay
Mrs. Vera McKissic
Ms. Alisha McMillian
Mr. and Mrs. Mark Meiches
Mr. and Mrs. Kenneth Meline
Ms. Audrey Menarik
Mr. Les Merwin
Mr. Bradley Metcalf
Metropolitan Baptist Ministers
Wives Club
Mr. Andrew Meyer
Mr. and Mrs. Dave Millheiser
Mr. and Mrs. Herbert Moltzan
Ms. Caroline Moran
Mr. Adam Morgan
Ms. Robbye N. Morrow
Mr. Kennedy Mujokoto
Ms. Lindsay Muller
Mrs. Patricia Mulligan
Mr. Kenneth Munyer
Mr. John Murr
Mr. James Neitzel
Mr. Aaron Nichols
Mr. Phillip Niels
Mr. Scott Nordhaus
Mr. Bob Ogle
Mr. Myles Oh
Mr. George O'Reilly
Mr. Robert Owens
Mr. and Mrs. Kenneth Pace
Mr. Chet Parker
Paro South
Ms. Nancy Payne
Mr. and Mrs. Thomas Payne
Mr. Victor Pena
Ms. Kathy Petersen
Mr. Dillon Peterson

Mr. Dan Piassick
Mr. Louis J Polito
Mr. Christian Prescott
Mr. Mike Preston
Mrs. Sheryl Prince
Ms. Joan Pritchett
Ms. Melanie Pugh
Mr. Chris Quadri
Mr. Brendon Quick
Mrs. Yessenia Ramirez
Mr. Daniel Ramirez
Mr. Cesar Ramirez
Mr. Cameron Rapp
Mr. Don Raspante
Mr. Steven Ratliff
Ms. Ellen Ray
Mr. Ron Reber
Mr. Christian Rebolton
Mr. Jason Reed
Mr. Grant Reehling
Ms. Meghan Reilly
Ms. Brenda Richards
Mrs. Gina Richmond
Mr. Paul Riddle
Dr. and Mrs. Steven Rinner
Mr. Russell Rippamonti
Ms. Lee Etta Roberson
Mr. Mark Roberts
Mr. John Robertson
Mr. Tyler Robertson
Ms. Stephanie Rock
Mr. and Mrs. Peter Roe
Mr. Tony Roe
Rolnick & Gordon Design
Mr. and Mrs. Richard Ronchetti
Mr. Bob Roos
Mr. Shane Rosencrance
Mrs. Alma Rouse
Ms. Stacy Roush
Mr. Garland Rowan
Ms. Judith Rudoff
Mr. Ali Ruff
Ms. Katherine Ruiz
Mr. Jorge Rujana
Mr. Glenn Runnels

Sacred Heart Catholic Church
Mr. Hernan Saenz
Mr. Cory Sakamoto
Mr. and Mrs. Mario &
Vonnice Salguero
Mr. Stephen Salstrand
Ms. Renee Sanderson
Ms. Suzanne Sandy
Mr. Michael Sanford
Mr. Sid Sapru
Ms. Becky Sartain
Mr. Allan Sartain
Mr. Danny Saucedo
Mr. and Mrs. John L
Scarborough
Mr. Kyle Schellhorn
Ms. Molly Schindler
Ms. Betty Schultz
Ms. Luanne Schultz
Mr. Chris Schultz
Ms. Jan Scogin
Mr. and Mrs. B. J. Scott
Mr. Ryan Scripps
Mr. Mahavir Semwal
Mr. Robert Senter
Mr. Travis Sewell
Mr. and Mrs. Fred Sewell
Shield Healthcare
Ms. Cora Sholars
Mr. and Mrs. Steven Shuler
Mr. James C. Simpson
Mr. Corey Simpson
Mr. Cliff Siverling
Mr. Conner Slagle
Mr. Guy Smith
Mr. Ryan Smith
Mr. Red Smith
Mr. Gary Smith
Mrs. Jean Snodgrass
Ms. Janet Snyder
Mr. James Speed
Ms. Dana Squires
Ms. Sue St John
Mr. Jerry Stafford
Mr. Jason Stallings

Ms. Anette Stewart
Mr. Michael Stork
Mr. Jerry Sutton
Ms. Linda Sykes
Mr. Don Tarvin Jr.
Ms. Rosalie Taubman
Texas Presbyterian Foundation
The Episcopal Church of
St. Thomas the Apostle
Mr. Mark Thibodeau
Mr. and Mrs. David Thomas
Ms. Loryn Thompson
Mr. Chris Tope
Mrs. Dalia Torrez
Ms. Kristen Trest
Truist
Ms. Madeline Tucker
Ms. Barbara Turbidity
Ms. Barbara S Turner
Mr. Austin Ullrich
Mr. John Urban
Ms. Patricia Vaughan
Mr. Luis Veliz
Mr. Victor Villalobos
Mr. Victor Vitol
Mr. Raj Vogga
Voya
Mr. Pero Vrucinic
Mr. Bill Wade
Mrs. Maxine Wade
Mr. Michael Waldron
Mr. Rudy Walker
Mr. Stephan Waller
Mrs. Patricia Ward
Mrs. Vernice J. Warden
Mr. Jim Watkins
Mr. Dean Weaver
Ms. Jane Weempe
Mrs. Linda White
Mr. Jake White
Mr. Ronald Whitley
Mr. Ashton Whitley
Mrs. Claudia Wikman
Mr. PJ Wilhelms
Mr. Richard Wilkens

OUR DONORS

JUNE 1, 2015- JULY 31, 2016

\$1 TO \$499 (CONT.)

Ms. Jerrilyn Williams
Mrs. Gretchen Williams
Mr. Paul Williams
Mr. and Mrs. Charles Williamson
Ms. Christine Williford
Mr. George Wills
Mr. Randolph Wilson
Ms. Susan Achulte Wilson
Ms. Mary Wilson
Mr. David Wilson
Mrs. Lisa Wilt
Mrs. Marlys C Wing
Ms. Twania Wise
Mr. Matthew Witte
Ms. Teresa Wolfe
Ms. Heather J Wood
Mr. Grant Wood
Mr. Jason Wood
Mr. Pat Wood
Mr. and Mrs. Richard G. Worth
Mr. Chris Wright
Mr. Shane Wynsma
Ms. Jobeth Yarbrough
Mr. Nathan Yates
Mr. Yue Yin
Mr. Josh Yingling
Mr. Daniel Zilmer
Mr. and Mrs. Gary Zumwalt

FOUNDATIONS & CORPORATIONS

Adolfson & Peterson Construction
AFLAC
AlphaGraphics - Park Cities
Allstate Giving Campaign
Amazon
Anonymous
Avance-Dallas
Avita Pharmacy
Bain & Company
Bank of America
Barnes & Thornburgh
Baylor Scott & White Health
BBVA Compass Foundation
Ben E. Keith Co.
Ben Washington Baptist Church
Bethany Baptist Church
Black New Media
Broadway Cares Equity Fights AIDS
BW Group Inc
Calypso St. Barth
Canyon Creek Presbyterian Church
CarMax
Cathedral Of Light Church
Central Christian Church
Central Lutheran Church
Charity Golf International
Children's Medical Center
The City of Dallas
Communities Foundation of Texas
Compass Bank
The County of Dallas
Dallas Assoc Of Health Underwriters
Dallas County Master Gardener
The Dallas Foundation
Dallas Independent School District
Dallas Jewish Community Foundation
Dallas Lace Society
Dallas Nursing Institute
Dallas Women's Foundation
David M Crowley Foundation
DIFFA Dallas
The Episcopal Church of St. Thomas the Apostle
Fidelity Charitable Gift

First Christian Church
George & Fay Young Foundation
Give With Liberty Employee Donation
Goldman Sachs
Hailstone Insurance
Harold Simmons Foundation
Harry W. Bass, Jr. Foundation
Heart of Dallas
Hillco Insurance
Holy Cross Catholic Church
Hope Supply Co.
Hunt Oil Company
The Hyde Foundation
IBM Corporation
Imagine Nation Books Ltd
IME Becas
The Inge Foundation
Innovative Direct Media
Insurance Industry Charitable Foundation
J L Williams Foundation
Kids Care Therapy
Kurz Group
Liberty Mutual Foundation
Lonestar Charity
MAC AIDS Fund
Merit Energy Associates
Metrocare Services
Metropolitan Baptist Ministers
Molina Healthcare
The Moody Foundation
The Moozie Foundation
Norco Moving & Storage
ON Magazine
Orix Foundation
Parkland Hospital
Paro South
Pepsico Foundation
Plymouth Park Methodist Church
Prism Health North Texas
Prosperity Bank
The Ralph and Genevieve B. Horween Foundation
The Rees-Jones Foundation

OUR DONORS

JUNE 1, 2015- JULY 31, 2016

FOUNDATIONS & CORPORATIONS (CONT.)

Regions Bank
Research Now
Rogness Brewing Company
Rolnick & Gordon Design
Sacred Heart Catholic Church
Safeway Inc
Savor Gastropub
The Senior Source
Shield Healthcare
Sturgis Charitable Trust - Boa
Texas Department of Agriculture
Texas Department of Health and Human Services
Texas Department of State Health Services
Texas Health Resources
Texas Presbyterian Foundation
Therapeutic Interventions
Therapy 2000
Third Shift Motorcycles
The TJX Foundation
Truist
UBS Financial Services
United Way of Metropolitan Dallas
UPS
Voya
Westdale Asset Management
Whataburger
White Rock Beer Project
The Women of Saint Michael
The Woodall Foundation
Worldpass Travel Group

IN-KIND

Mr. Barry Adamson
Alamo Draffhouse
Ms. Monica Alvarez
American Airlines Center
American Flood Research
Balloon's to You
Bank of America
BBVA Compass
Ms. Rhanetta Benton
Mrs. Cynthia Bowen
Brass Tracks Barber Shop
Mrs. Amy Brown

IN-KIND (CONT.)

Mr. Homer Brown
Bullzerk
Ms. Ann Cain
Central States Manufacturing
Chick-fil-a
College of Health Care Professions-
Dallas Campus
Ms. Angela M. Craddock-Lawson
Cutz Carlitos Way Barbershop
Dallas Fire Department
Dallas HR
Dallas Morning News
Dallas Police Department
Dallas VA Medical Center Residents
El Centro Community College
Ms. Ella Emma
Enlink Midstream
Mr. Samuel Espinoza
Ms. Hiliary Filstrup
Mrs. Becky Fite
Mr. and Mrs. Ryan Friend
Mr. and Mrs. Robert Fulford
Mrs. Lisa Genecov
Mrs. Linda Hall
Hardies
Hope Supply Co.
Ms. Lisa Huff
Hunt Consolidated, Inc.
Ms. Monica Hunter
IBM
Infusion Church
Johnny Mac Trio
Ms. Rehme Kasey
Keswick Hall and Golf Club
KPMG's Family for Literacy (KFFL)
Ms. Marla Leday
Mr. and Mrs. Lance Leslie
Ms. Claire Lindsey
Local Moto + Provisions
Local Press + Brew
M & M Event Rentals
MAC Cosmetics
Mr. Ryan McCuller
Mr. Jansel Mejia
Merck Pharmaceuticals

Ms. Laverna Mitchell
Motion Industries
Motorcycle Superstore
National Charity League-Park Cities
Mrs. Stuart Newsome
NorthPark Church
Ms. Judy Nuss
ON Magazine
Our Lady of San Juan Youth Group
Park Place Lexus
Ms. Rashi Patel
Ms. Nikki Phelan
Mrs. Jean Raub
Regions Bank
Rogness Brewery Company
RPS Group
Ms. Loretta Salazar
Ms. Sherri Scott
Ms. Ivy Singleton
Spanish House
Stanley Korshak
Starbucks
Ms. Laurie Steele
Taco Cabana
Temple E-Manuel
The Capital Grill
The Woodall Foundation
Third Shift Motorcycles
Mr. and Mrs. David Thomas
Ms. Maddie Toole
Mrs. Dalia Torrez
Tristar Risk Management
Ms. Karla Trusler
UBS Financial
Univision
UPS
Mrs. Trina Walls
Watch Guard Video
Westdale
Whataburger
White Rock Beer Project
Mr. Ashton Whitley
Mr. and Mrs. Christopher Williams
Mr. Grant Wood
Mr. Martin Woodall



STAY IN TOUCH



ONLINE: BRYANSHOUSE.ORG

PHONE: 214-559-3946

MAIL: 3610 PIPESTONE RD. DALLAS, TX 75212



JUBILEE SOCIETY

Members spend time with children being served at Bryan's House.



This report was made possible thanks to Black New Media.

BNM
BLACK NEW MEDIA