

2022

ANNUAL REPORT



Bryan's
House

COMPASSION TRUST EXCELLENCE OPTIMISM



FROM OUR LEADERSHIP

Dear Friends,

Finding pathways to inclusion as thought-leaders— convening and urging health, education, government, nonprofit partners, corporations and the general community to create spaces for people with disabilities to live, work, thrive and contribute; and discussing equity not just diversity and accessibility, has been extremely transformative this past year at Bryan's House.

Our core values are compassion, trust, optimism, and excellence. We live these every day. Twenty six percent of the country's population has a disability. Sharing our families' stories with constituents, recognizing the challenges, and opportunities is so important. Our children and families served need to feel a sense of belonging. As an agency, we are leading the way to normalize conversations around inclusion and being creative to meet the needs of families who earn less than \$24,000 a year and who have a child or children with special needs. It's the right thing to do. Let's make our society better, united, and neighborly.

This year we stayed the course and continued to deliver our mission through the great resignation, post COVID, and beyond. In collaboration, we crafted and implemented a three-year strategic plan with a vision of growing our clinical areas and outreach to serve more people safely and with excellence.

On November 20, 2022 (ironically our 34th Anniversary), we were awarded the *Dallas Morning News* People's Choice Award for the Best Charity Event of 2021.

As an agency, we shifted our thinking, deciding to use the word 'unhoused', instead of 'homeless' in our daily culture. Many families we serve through crisis intervention feel that the homeless description is negative. Those who need new homes are tenacious and unwavering – escaping conflict, abuse, poverty, and circumstances beyond their control.

We want to change the conversation in the community – labels off! Through our support services program, our social workers find the resources needed for folks to be successful while transitioning to a new life or opportunity; we teach them budgeting, life and parenting skills while providing a medical home, access to health resources, crucial mental health resources at every step, and therapies to be able to function in these challenging times. In addition, this past fiscal year we:

- Earned the CANDID Platinum Accreditation, its highest rank for nonprofit transparency.
- Were nominated and celebrated in Austin as the HEB Statewide Early Childhood Finalist for Excellence in Education.
- Balanced the budget, ending the FY22 fiscal year with a surplus, for the 5th year in a row.
- Maintained our National Association for the Education of Young Children (NAEYC) Accreditation.
- Robustly partnered with Family Gateway and Texas Muslim Women's Foundation to serve families in those diverse populations and cultures that support unhoused children with special needs who are transitioning.
- Built our capacity to serve more children.

What's next? A lot of fun and challenges lie ahead but together we will hold our resolve to change the trajectories for children with special needs, providing trusted programs locally, to those who have nowhere else to turn. Join us as we continue our work and thank you for your unwavering dedicated support.



NICOLE BLYTHE
Board Chair



STEVEN UPCHURCH
Immediate Past Board Chair



ABIGAIL ERICKSON-TORRES
CEO



SUCCESS STORY: CHILDREN'S DEVELOPMENT PROGRAM

Analia is two years old and has a rare neurological condition. Her mother, a single parent who is the family's only provider, worked nights so she could care for Analia during the day. She was exhausted but couldn't find a safe place that would ensure Analia's complex medical needs were met. She was referred to Bryan's House through our partner agencies. Analia receives early intervention services, onsite therapy, and loving care in a medically managed classroom. She makes progress every day, and mom can work full-time knowing Analia is in a safe, medically-supported environment.

SUCCESS STORY: SOCIAL SERVICES PROGRAM

It's a miracle that four-year-old Caleb is alive. He was born in Honduras at 32 weeks of gestation and had severe health issues. His legs were amputated at just one-month-old due to medical negligence. Wanting better care for Caleb, his family relocated to the U.S. After arrival, they faced many difficulties and were referred to Bryan's House. We immediately provided emergency financial assistance so the family could remain in their apartment and afford basic needs. After months of working with their case manager, the family is on their way to self-sufficiency, and Caleb is happy and thriving. Caleb's mom says, "We are so grateful for Bryan's House. The team is always there to support us."



SOURCES AND USES OF INCOME

FINANCIAL SUMMARY: JULY 1, 2021–JUNE 30, 2022

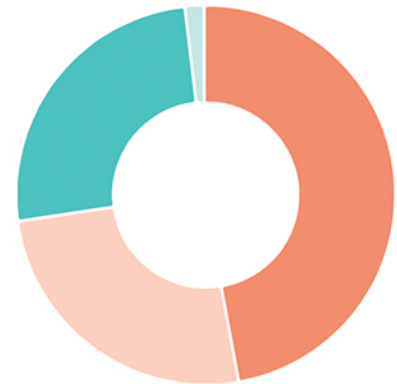
AUDITED
BY:



Bryan's House is committed to the highest standards of stewardship of the resources and the trust of its donors. We have also exponentially expanded our funding efforts to meet Fiscal 2023 goals.

REVENUES

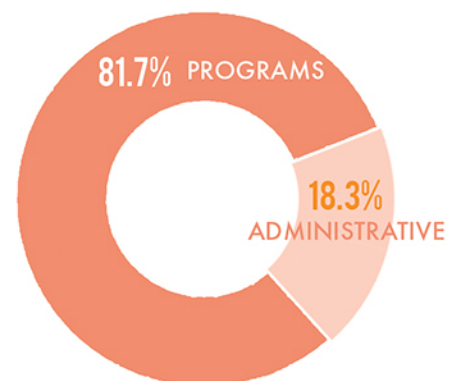
COMMUNITY	1,165,898
GRANTS	633,816
GOVERNMENT	629,493
PROGRAM INCOME	48,449
TOTAL	\$2,477,656



47% COMMUNITY
25.5% GRANTS
25.4% GOVERNMENT
1.9% PROGRAM INCOME

EXPENSES

PROGRAMS	1,952,107
ADMINISTRATIVE	437,414
TOTAL	\$2,389,521



ACCREDITATIONS:





IMPACT IN NORTH TEXAS

JULY 1, 2021 – JUNE 30, 2022



33,143

HOURS OF
CHILD DEVELOPMENT



24,069

HOURS OF
CASE MANAGEMENT



1,631

ONSITE
THERAPY SESSIONS



18,709

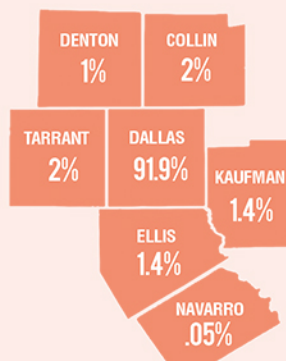
MEALS/SNACKS
SERVED ONSITE

AREAS SERVED

TOP ZIP CODES SERVED

75211 75216 75254 75228 75224

FAMILIES BY COUNTY



3.4

AVERAGE
HOUSEHOLD
SIZE



\$24,663

AVERAGE HOUSEHOLD
INCOME

LEVERAGED SUPPORT RIPPLE EFFECT



HELPED FAMILIES FIND
\$38,646

IN SCHOLARSHIPS
AND FUNDING
OUTSIDE OUR
AGENCY

\$3,217

UTILITIES
ASSISTANCE



\$10,248

BASIC NEEDS
SPECIAL
PROJECTS



\$150,612

COVID EMERGENCY
FUNDING ASSISTANCE
(HOMELESSNESS
PREVENTION)

1,326

VOLUNTEER
HOURS



BECAUSE WE INTERVENED EARLY...

- 
- 83%** of families (whose goal was to advance their education) furthered their education
 - 100%** of families found a "medical home" for their children
 - 98%** of families established permanent homes
 - 88%** of families accomplished at least 80% of their self-sufficiency goals
 - 86%** of families graduated our care with a job and steady income
 - 88%** of families stabilized their domestic situation and are thriving
 - 90%** of families received medical devices needed to provide mobility in their home, vehicle, or classroom
 - 86%** of families learned how to create and manage a home budget
 - 88%** of families learned how to save with a Case Manager
 - 75%** of families learned to plan and shop wisely
 - 100%** of families were accompanied (in-person or remotely) by staff to advocate for medical, legal, employment or other services

STUDENTS RECEIVING THERAPIES

Children may have multiple diagnoses and therapy services delivered daily at our West Dallas campus.

Speech Therapy:	739 sessions
Occupational Therapy:	516 sessions
Physical Therapy:	244 sessions
Vision Therapy:	12 sessions
Applied Behavior Analysis:	108 sessions
Other:	12 sessions

(SST, Orientation and Mobility, Nutrition, Orthotics Measurements)



COLLABORATION AND INSPIRATION

We are thrilled to work with leaders who understand what it means to belong and that change is possible within rigid systems that exist in our community. Bryan's House focuses on forming robust partnerships with those on the frontlines helping the unhoused, abused or transitioning into residences who have children with special needs. We focus on providing services directly to the children with challenges. Many constituents in the programs at Family Gateway and Texas Muslim Women's Foundation speak different languages like Spanish, Pashtu, and Farci. Starting conversations about our services in outreach is best done by people they trust, who have influence in these specific populations. Partnering with these agencies helps our entire community, so that we may serve more children with special needs and break down barriers to care. We are grateful and humbled to share this work with our friends in service.



“

We greatly value so many partners who bring their special expertise and resources to support the complex aspects of those experiencing family

homelessness. We are delighted to partner with Bryan's House to help our families who have children with special needs.”

—Ellen Magnis
CEO, Family Gateway



“

TMWF's partnership with Bryan's House is critical to our mission of empowering women and their families while serving survivors of domestic violence. BH understands the intersection of family violence and children with special needs. We look forward to serving more families through this collaboration.”

—Mona Kafeel
Executive Director, Texas Muslim Women's Foundation



ADVOCACY

As thought leaders in our field, we diligently advocate for young children with special needs in several public and private forums (English, Spanish, Mandarin).

In FY22, Bryan's House leaders spoke at various conferences locally, statewide and at national events including the Association of Early Learning Leaders National Conference; The Dallas Woman's Club; Junior League Alumnus Group—Topics and Trends; Let's Talk Supply Chain Podcast; DEI and Disability Inclusion; The Senior Source: Grandparents Program Training on Autism; The Silicon Valley Latinx Leadership Summit in San Francisco; the New Jersey Childcare Association State Conference and Symposium; Early Intervention Breakfast Symposium: Belonging with Lisa Ong; Early Care and Education Companies staff development event, and the US Global Leadership Conference (USGLC).



Bryan's House dream team members Emily Pullin and Shannon Hendricks at the Association of Early Learning Leaders Conference



The Early Childhood Committee on Disabilities at the "The State of Children with Disabilities in Texas" panel at Communities Foundation of Texas, hosted by the Rees Jones Foundation, chaired by Abigail Erickson-Torres.



“

There is a severe lack of data collection for children with disabilities under the age of 8.

Government agencies, our mayors, funders, and nonprofit leaders need to find ways to work together to track quantifiable data, that is not included in reports back to programs funded Federally or through Statewide programs. It is essential that grassroots organizations work together so that true numbers and systemic pathways are found."

—Abigail Erickson-Torres
CEO, Bryan's House



BOARD MEMBER PROFILE:

LOLA DADA-OLLEY ATTORNEY AND DISABILITY INCLUSION ADVOCATE

"I serve Bryan's House because it's an amazing organization that not only addresses the needs of children with customized medical and academic needs, but it also helps to fill in the gaps of the entire family's needs through education and outreach efforts that meets parents and/or caregivers where they are. As an attorney, a mom of two children on the autism spectrum, and a sister to an autistic, intellectually disabled man, I understand firsthand the role that community plays in the health and overall well being of families like mine. I am grateful to the entire Bryan's House team for their tireless efforts in building up these families, and, therefore their surrounding communities."

STAFF PROFILE:

CINDY RYAN DIRECTOR OF ADVANCEMENT

Cindy came to Bryan's House just over two years ago and has had an enormous impact on the success of the advancement efforts of the agency to serve more children. As a leader in her field, she directs her development team to thrive. Cindy brings fun and laughter which makes her a fantastic addition to our agency's culture.

After a 20-year friendship as neighbors and colleagues in the nonprofit arena, CEO Abigail Erickson Torres was delighted to welcome Cindy as a dream team member, knowing her experience, personality, creativity, talents, and skills would be the catalyst the agency needed to grow its vision to self-sustain and expand the delivery of our mission to more people with more pathways to inclusion for children with special needs.



“

I love working at Bryan's House. There is a family culture here, where my ideas are supported, and I am nurtured to live my dreams as a professional woman in my career. It's so refreshing."

"They care about the people we serve and those like me who do the work to serve our constituents daily. The best part of my day is seeing the children. I love rocking the babies on my lunch hour when I can, and it means so much when children meet or exceed their milestones. I am blessed to have a great career here and time to be a mom and wife on my terms. The people I meet in the community share my love of the agency and want to help, serve, or give."



REFLECTIONS

TINSLEY SILCOX

PRESIDENT-ELECT, ASSOCIATION OF INDEPENDENT SCHOOL LIBRARIANS

"I continue to give to Bryan's House long after my amazing experience on the Board for many reasons, but foremost is the sheer joy I receive from seeing the smiles on the children's and parent's faces to whom we offer the possibility of a better, happier, and fulfilling life—children becoming healthier and becoming their best selves, and parents empowered to become self-sufficient. My faith requires that I do everything in my power to leave this place better than I found it, and Bryan's House is, for me, the means to that end."

Pictured with friends of Bryan's House Rhonda Sargent-Chambers and Kim Hext

INCLUSION + HOPE

DONNA GERMAN

COMMUNITY VOLUNTEER

"I got involved with Bryan's House through the Wisdom's Hope merger, serving on the board and integration team. Of course, I was already aware of their rich history of serving children and families impacted by AIDS, as well as the broadening of their mission over time to include special needs of all types. I expected we would continue this legacy of great work. What I did *not* expect was how quickly I would fall in love with the Bryan's House families. These extraordinary people are managing overwhelming physical, emotional and economic challenges with courage, optimism and resilience that is inspiring and humbling.

From its founding day, the essence of Bryan's House is diversity and inclusion, recognizing and valuing the worth and potential of every individual -- especially the extraordinary kids we are privileged to serve. If you are not already part of the Bryan's House family of stakeholders, I invite you to take a walk down the hallway and see these kids for yourself. It is my expectation that you'll fall in love as well. Join us in being part of something truly meaningful!"





INNOVATION LAB

Work214.

UNIQUE MODELS

We are strategically working with multi-stakeholders in a new initiative which came out of our innovation lab at work214.com, to create connected communities with partners and resources aligned to drive systemic change on a common agenda. Working with our Program Committee of the Board, and Keith Mankin, Committee Chair, our goal is to serve more families with less funding in more areas of North Texas in a collaborative way where agencies are working with each other seamlessly, instead of jockeying for funding from local and statewide sources.

BOARD RETREAT '22: STRATEGIC PLANNING

Members of the Bryan's House Board met at the Innovation Lab at Work214 in Uptown Dallas to finalize plans for the agency over the next three years. The 21-member Board are hardworking, dedicated volunteers who go above and beyond, everyday, to serve our families. There is comradery and meaningful involvement with our team members at events with committees, and also at the graduating client level through the Beyond Breaking Barriers and Voz Alta groups. Our diverse Board cares deeply about our mission, our success, and each other.

Work214 Founders Roger and Lisa Chang pictured with Larry David >>



2022 INCLUSION^{AND} EARLY INTERVENTION LUNCHEON

EARLY INTERVENTION

We were so honored to hear Dawn McCoy (who has a young son living with a traumatic brain injury) share her story, and two fireside chat guests: Kiera and Maricel, who dared to reveal their very personal experiences about how early intervention impacted their children's lives for the better. They are the parents of current and graduated clients at Bryan's House.

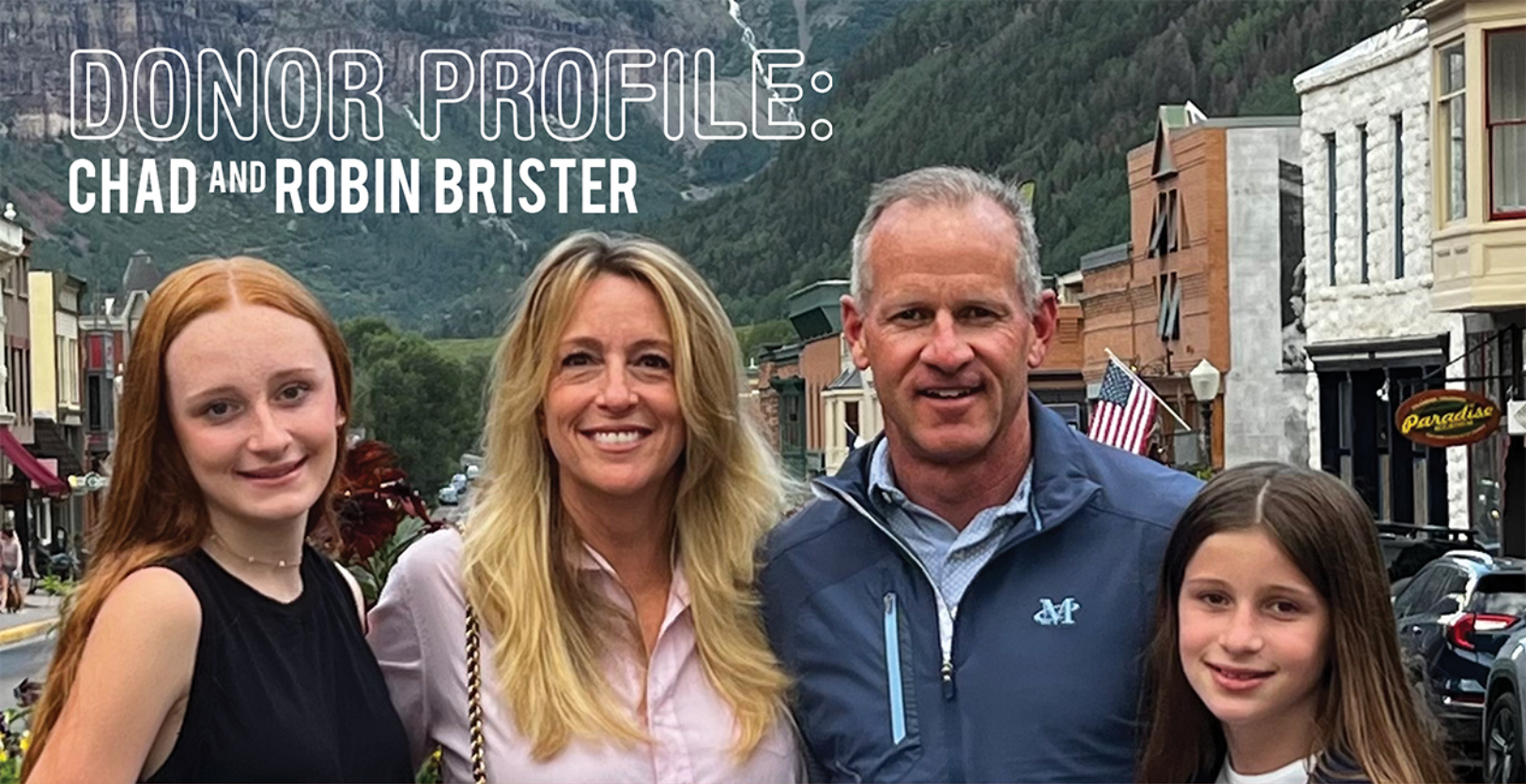
Luncheon Chairs: Adrienne Wagner, David Wagner, and Honorary Chair Carol Seay, greeted a full room of friends, supporters, and leaders. Laughter was heard throughout the event and tears were shed as awardees were honored and all listened to speakers. Most attendees wore a touch of green, which is the Wagner's favorite color.

SCAN TO
WATCH THE
LUNCHEON
VIDEO:



DONOR PROFILE:

CHAD AND ROBIN BRISTER



"As a family, we have worked with numerous non-profit organizations, but Bryan's House holds a special place in our hearts. It is difficult to imagine the daily challenges families face who have a child with chronic medical or development needs. We have been humbled by the resilience of the families being served by the amazing staff at Bryan's House. It is inspiring to hear the success stories of these children in their most formative years, as well as the care and support provided to their families. It has been our honor and privilege to support Bryan's House for many years. We have no doubt that their transformative, comprehensive, and inclusive approach to serving these families will continue to dramatically improve lives."

CHILDREN'S DIAGNOSES SERVED

GENETIC DISORDERS

- Down Syndrome
- DiGeorge Syndrome
- Cystic Fibrosis
- Pitt Hopkins Syndrome
- Chromosome 14 and 17 translocation
- Kabuki Syndrome (rare multi system disorder)
- Hereditary spherocytosis (rare blood condition)
- Hirschsprung's Disease
- Sickle Cell Disease
- Dravet Syndrome-intractable epilepsy
- Angelman Syndrome
- Moebius Syndrome
- Chromosome 13 deficiency
- Phelan-McDermid 22q13 Deletion Syndrome
- Rubinstein-Taybi Syndrome
- Branchio-Oculo Facial Syndrome

CANCER

- Leukemia
- Wilms tumors (kidney tumors)
- Ganglioneuroblastoma

NEUROLOGICAL DISORDERS

- Hydrocephalus
- Microcephaly quadriplegia
- Autism spectrum
- Cerebral palsy
- Brain/cerebral atrophy
- Focal neurological deficits
- Dyslexia
- Epilepsy
- Hypotonia
- Learning disabilities
- Tuberculosis sclerosis
- Static encephalopathy
- Retts Syndrome
- Shaken Baby Syndrome
- Spinal bifida
- Swallowing disorders
- FOXG1 Mutation Syndrome
- Vertical nystagmus
- Batten Disease
- Neurogenic bowel and bladder

RESPIRATORY/ENT DISORDERS

- Feeding needs/G-tube
- Trach ventilator dependent
- Chronic lung disease
- Adenotonsillar hypertrophy

MENTAL HEALTH

- Failure to thrive
- Depression
- Anxiety disorders
- Suicidal tendencies
- Oppositional defiant disorder
- Post traumatic stress disorder
- Selective mutism
- Attention deficit hyperactivity disorder
- Bipolar depression

MUSCULAR/SKELETAL DISORDERS

- Idiopathy scoliosis
- Abnormal gait
- Plagiocephaly (skull deformation)
- Arthrogryposis (congenital joint contracture)
- Congenital limb malformation
- Osteogenesis imperfecta (brittle bones)
- Bilateral club feet
- Cleft lip and cleft palate

CARDIAC DISORDERS

- Truncus arteriosus
- Patent ductus arteriosus (rare heart condition)
- Hypoplastic right heart syndrome
- Patent Foreman Ovale

BLOOD DISORDERS

- Thrombocytopenia
- HIV/AIDS impacted
- Cobalamin Deficiency
- Arterial Thrombosis
- Esophageal Varices

HEARING/VISION DISORDERS

- Deafness/profound hearing loss
- Myopic degeneration
- Bilateral cloudy cornea
- Auditory Neuropathy

RENAL/KIDNEY DISORDERS

- Diabetes insipidus
- Hypertension/bilateral hypoplastic kidneys
- Renal failure - kidney transplant



2021 PATHWAYS TO INCLUSION LUNCHEON

Bestⁱⁿ DFW

People's Choice

The Dallas Morning News

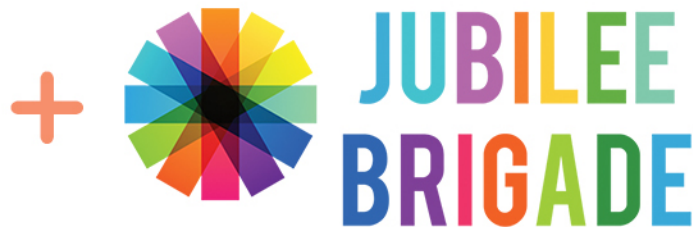
We are thrilled to announce that we have been awarded the People's Choice BEST CHARITY EVENT by *Dallas Morning News* for 2021. We had some tough competition from the Cattle Baron's Ball and Meat Fight, yet here we are! Thank you for those who voted, attended, and participated.



SCAN THE CODE TO WATCH THE
PANEL PORTION OF THE
LUNCHEON. IT WAS BRILLIANT.



CORPORATE VOLUNTEERS



We are grateful for the thousands of hours of volunteer teamwork from the Board and local community, who have donated time and talents to make sure our kids are happy, nurtured, learning and their dignity is being preserved.

Thank you Jubilee Brigade members! We are extremely grateful to volunteers from:

- Santander Consumer USA
- Coach
- ARM
- Datascan
- Bank of America
- Lone Star Monarchs
- Stafford Smith
- Valiant Residential
- Gensler
- Hitachi High-Tech America, Inc.
- JIH Recipes
- National Charity League
- The Temple Emanu-El Brotherhood
- Bain and Company
- North Texas Honda Dealers
- DIFFA Dallas Young Professionals
- Work214
- Southwest Airlines



BOARD OF DIRECTORS



ALLISON SHELTON
Aspire HR



DIPU MUKHERJEE
VLMY&R



TRACY PICON
Microsoft



KEITH MANKIN
Writer/podcaster



LAURA RAMIREZ
Trinity Industries



DAVID WAGNER
Kohl's



LOLA DADA-OLLEY
JP Morgan Chase



CHRISTINA
MENENDEZ-PETTIBONE
Pepsico



ROSE KAUR
Jester & Genius



MARICEL CROSS
O Group



NICOLE BLYTHE
Grant Thornton



GEORGE ARMSTRONG
Target



CRAIG LASHLEY
Valiant Residential



SARAH LAMB
Retail Connection



STEVEN UPCHURCH
Gensler



BIEGEL MACARAEG
Harlokyn Advisors



PAULA FEINBERG
Viadoro Wealth &
Philanthropic Strategies



MERCEDES OWENS
Barry's Bootcamp



RYAN M'CULLER
UBS



BELINDA RODRIGUEZ
AT&T



PEJA KRSTIC
Mot Hai Bah
+ Ichi Ni San



MARTHA LUMATELE
M'Kesson

ADVISORY BOARD

First Lady Laura Bush

Tom Caldwell

David Calhoun

Ralph Cousins

Ryan Friend

Dr. David Genecov (In Memoriam)

Dr. Lisa Genecov

Pam Gerber

Louise Griffeth

Nancy Halbreich

Linda Hall

Mike Harper

Thomas Haskins, Jr.

Stefanie Held

Lance Leslie

Sarah Losinger

John McFarland

Stuart Newsome

Cyndy Monie

Nancy Perot Mulford

Rust E. Reid

Nancy Roe

Ken Sheffield

Mary Ann Siller

MISSION:

To provide children with special needs and their families with trusted case management, educational, therapeutic and medically-supported care.

We accomplish our mission through these programs:

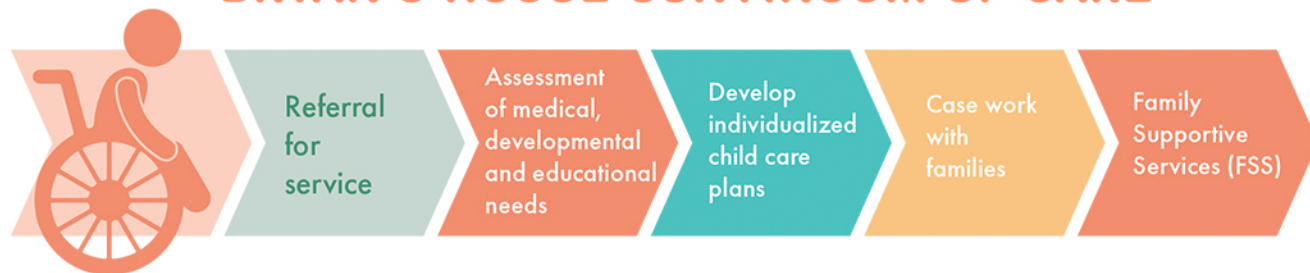
DIRECT ONSITE PROGRAMS integrate on-site nursing with high-quality education, therapy, and developmental care geared to each child's needs. Including an early childhood education program, respite care, after-school, summer, and holiday program, and collective therapies.

OFFSITE PROGRAMS provide individualized strategic intervention and planning designed to promote increased knowledge, skills, and behaviors that will enable families with special-needs children to manage emergencies, sustain basic needs, achieve their goals, and expand their opportunities for long-term success.

FAMILY SUPPORT SERVICES at Bryan's House provides case management and emergency financial assistance for low-income families who have children with special needs. This program is crucial to our clients as they work to overcome issues common to at-risk families struggling to meet the needs of their children.



BRYAN'S HOUSE CONTINUUM OF CARE



TO FULFILL THE MISSION OF BRYAN'S HOUSE,
WE LIVE THESE LIFE-AFFIRMING CORE VALUES:

COMPASSION: Respect, Inclusivity, Collaboration

TRUST: Authenticity, Equality, Integrity, Transparency, Accountability

EXCELLENCE: Quality, Dignity, Expertise, Responsiveness

OPTIMISM: Positivity, Tenacity, Visionary

SUPPORTERS JULY 1, 2021–JUNE 30, 2022

Molly and James Adams
The Addy Foundation
Abi Adeyeye
Jim Adler and Associates
Anonymous
Arun and Anuradha Agarwal
Air Texas AC and Heating
Albertsons Good Neighbor Program
Michael Alexander
Monica R Alonzo
Always Coco
AmazonSmile
Mary Andersen
Laura Anderson
James Andrew
AppShark
F. Thaddeus Arroyo
Beth Arsenault
Bryan Asquith
Andrew Astmann
AT&T Employees
Elizabeth Babb
Nichole Babiak
Catherine Bain
Donna and William Baker
Bank of America Employees
Kristi Bare
Jacques Bares
Mary Barnett
Barr-Hughes Family Fund
Emelia Barrientos
Mr. and Mrs. Matthew Barron
Ken Barth

Suzanne and Enrico Bartolucci
Harry W. Bass, Jr. Foundation
Jean Beasley
Karen Bebee
Eric Bellew
David Benedict
Fran and Mark Berg
Ashley Berges
Sandra Berman
Berry Family Services
William Betts
Louise Bexley
Monica Blacker
Ross Blackstone
Carrie and Brent Blake
Dave Blanco
Julie Blankenship
Nicole Blythe
Board of Directors of Bryan's House
Ellen and Tom Boehmer
Michael Bolden
Charlotte and Mel Booth
Heather Bowen
Cassandra Bradford
JazMyne Branch
Rick Bridwell
Robin and Chad Brister
Broadway Cares - Equity Fights AIDS
Dr. Lottye Brodsky
James Brown
Matt Brown
Regina Bruce and John Pickett
Lindsay Buchler

Brian Buckingham
Lucinda Buford
Tena Burley
Pamela Burnley
LoAnn Burt
Susan Burton
Jean Buys
Etta and John Caffey
Anna Caldwell
Canyon Creek Presbyterian Church
Katherine C. Carmody Trust
Nancy Carter
Terry and Stephen Casey
Sarah Cauble
Melissa Cavazos
Glenys Chafin-Garrett
Rhonda Sargent Chambers
Lisa Chang
Animika Chatterjee
Helen Chen
Mattie Chick
Children's Health
Brian Clarvoe
Barbara and Paul Clemens
Tracey Cline
Susan Cockrell
Stephanie Codara
Communities Foundation of Texas
Susan Corwin
Ethel Crawford
Elinor Crews
Maricel Cross
Barbara Hunt Crow

Mollie Crow
The David M. Crowley Foundation
Wanda and Walter Crum
Mimi Crume Sterling
Manuel Cruz
John J. Cush
Dallas Stars Foundation
Christina Darling
Riya Davar
Danielle Davil
Helen Buchanan Davis
Katherine Davis
Marla Del Rosario
Mark Delgado
Kathleen Delsanter
Janet Derichsweiler
Linda Deters
DIFFA - Design Industries Foundation Fighting AIDS
Alison R. Doherty
The Doherty Foundation
Neal Doherty
dot818
Kurt Drake
Tiffany Dumont
Donald Dunmore
Jason Dyke
Michelle and Mark Early
Courtney Edwards
Elizabeth W Boutique
Summer Elmazi
Robert Emery
Becca and Drew Epperley
Mari Epperson
Ericsson
Santiago Esquivel
Robbie Esteban
Sailaja Eubanks
David Evans
Kyra Ewer
Joan Faubion
Paula Feinberg
Fichtenbaum Charitable Trust, Bank of America, N.A., Co-Trustee
Marge Fielding
Lois and Ross Finkelman
Maureen Finnegan



SUPPORTERS JULY 1, 2021- JUNE 30, 2022

Disciples Women of First Christian Church
Michelle and Joshua Fishel
Lynn Fisher
Theresa Flores
Jill Frank
Nancy Franks
Karen and Gene Friedman
Leigh and Ryan Friend
Leo & Rhea Fay Fruhman Foundation
John Furlong
Future Generation
Chris and Megan Gaines
Lynette Galante
Michelle Gallagher
Shahriela Ganjoor
Michael Garrett
Sheila Garrison
Tim Garvin
Deborah Gaspar Jewelry
Cindy Gautreaux
Drs. Lisa and David Genecov Gensler
Erica Gerken
Pretti and Jay Ghosh
Kendra Gibson
William C. Gilliam
Lynne and Gil Glover
Debbie Godley
Angel Gonzales
JD Gonzales
Claudia and Martin Goodman
Greater Therapy Centers
Nancy Greenbach
Sonnie Greer
Judy Gremm
Mary Jo Grimes
Debra Grissom
Gordon Gunther
HI00 Latina Giving Circle at Texas Women's Foundation
Lynn Hailstone
Hailstone Insurance Group
Mitch Hallum
Mr and Mrs. Edward Halsell
Jerry Hammon
Tiffany Hamilton
Lindsay Hannah
Connie Harris
Toya Harris
Mason Hart
Candice Hawley
HEB Excellence in Education Program

Nikki Hedke
Sarah Heimbach Wood
Stefanie Held
Carolyn Henderson
Shannon Hendricks Family
Rue and Tuck Henry
Shana Herndon
Kim Hext
John Hilcher
Lyda Hill Philanthropies
Betty Hillin
Robert Hilton
The Hirsch Family Foundation
Hitachi High-Tech America, Inc.
Douglas Hively
Holland and Knight Foundation
Elizabeth Hood
William Horn and Robert Wong
Heather Houston
Norman Howden
Caroline and David Hundley
Tamara Hundley
Mr. and Mrs. D.H. Hunt
Kelly Hunter
Sandra and John Hurlbert
Susan Hutcheson
Cortney Hutchison
The Hyde Foundation
Jean and Ted Ingersoll
Greg Istre
J&J Printing Solutions
Mark E. Jacobs
Al James
Raymond James Financial Inc.
William Jarnagin
JLH Recipes, LLC
Tommy Johnson
Bonnie Johnston
Frank Jordan, III
Karisti Julia
Junior League of Dallas
Louise W. Kahn Endowment
Fund of The Dallas Foundation
Srikanth Reddy Kathram
Rose Kaur
Scott Kehn
Daniel Kelly
Mariam Khan
Edward Kimmelman
Carl B. and Florence E. King Foundation
Mary King-Moore
Elese Kirby
Jennifer and Kevin Kirksey

Yuko Kitamura
Andy Kivilaan
Craig and Sunny Knocke
The Koen Family
Robert Kucharski
Neil Kumpers
Amber LaFrance
Rana Lahiry
Christina Lail
Sarah Lamb
Graham Lane
Corey Lark
Craig Lashley
Roberta Lazarus
Leticia Ledesma
Lawanda Lee
Corey Lemonier
Paula and Lance Leslie
Liberty Capital Bank
Liberty Mutual

Heather and Barrett Linburg
Mary-Jo Lincicome
Elly Lindsay and Randall Bonifay
Cindy Liu
Charles Lloyd
Bands of Hope
Lisa Long
Kelly Love
Leslie Lucks
Martha Lumatete
Rose Luncasu-Rolea
Brittney Luther
Biegel Macaraeg
Florence Madison
Hattie Mae Lesley Foundation
Make It Count Family Foundation
Anonymous
Stacey Malcolmson
Judy Mallillin



SUPPORTERS JULY 1, 2021–JUNE 30, 2022

Adele Malpert
 Blake Manganiello
 Keith Mankin
 Richard Margolin
 Angela Marrero
 Richard Martin
 Greg Mason
 Nancy Mason
 Kelli McCarthy
 Wendy McConney
 McCuller Family Fund at the
 Dallas Foundation
 Karen McDaniel
 Sandy and Don McDonald
 Linda and John McFarland
 Exie and Johnny McGee
 Jeff McKenzie
 Ana McKinney
 Marcy McMurtry
 Gerald Mecca
 Millie Medellin
 Belva and Ken Meline
 Kevin Menard
 Dinora Mendoza
 Debra Merlino
 Renae Meyer
 Dan Micciche
 Judy and Ken Mighell
 Celeste Mijares
 Shannon Miller
 Casey Mills
 Nelson Miranda
 Ayako Moore
 Michelle and Gary Moore
 Susan and Gary Moore
 Christina Moore-Salinas
 The Moozie Foundation
 Morning Star Family Foundation
 Dipu and Ann Mukherjee
 Handal Murat
 Jenny Murphy
 Sandy Nachman
 Diane Naquin
 Navias Family Foundation
 NCL - Park Cities Chapter
 Miranda Nelson
 Neena Newberry
 Newmark & Company Real
 Estate, Inc.
 Stuart Newsome
 Jan and Tom Newsome
 Huy Nguyen
 Vi Nguyen
 Julie Noel

North Dallas Bank and Trust
 North Texas Disability Chamber
 Maria Novoa
 Doug Obst
 Larry Offutt
 Lola Olley
 Jan and Robert Osborn
 Angela Owens
 Deborah Owens
 Josh Owens
 Mercedes Owens
 Paired Together Talents
 Carina Palfenier
 James Paris
 Oksana Patrick
 Keely Penn
 Pepsico
 PepsiCo Foundation
 Melanie Perkins
 Courtney Petruska
 Christina Menendez Pettibone
 Linh Pham
 Phillips Foundation
 Jane Pierce
 Pink Toes Nail Bar
 Rachel Pinn
 Aaron Pinto
 Andrea Pittman
 Cynthia Pladziewicz
 Katherine Polakoff
 Tracy Porter
 Sammi Powers
 Tolu Princewill
 Robert Radius
 Linda and Bob Rau
 Jean and Andy Raub
 Anne and Robert Ray
 Derrick Ray
 Jennifer Redmond
 Randall Reed
 Regen IV Wellness
 Margot and Rust Reid
 Lora Reidmiller
 Susie Reukema
 Kristin Reusser
 Agustin Reyes
 Leticia Escalante Reyes
 Glenda Ribelin
 Joan Richardson
 Caleb Riley
 Christine and Steven Rinner
 Kelli Roach
 Janet and Robert Rodrigues
 Belinda Rodriguez



Kim Rodriguez
 Nancy and Peter Roe
 Karen Rogers
 Bob Roos
 Neall Rose
 Brian Rose
 Rose Family Foundation
 Kimberly Rossbach
 Sonali and Rajiv Roy
 Judy Rudoff
 Rudolph Foods
 Bidisha Rudra
 Dr. Carla and Joe Russo
 Cindy and Joe Ryan
 Laura Ryan
 Goldman Sachs
 Kathrine Saks
 Santander Consumer USA
 Santander Consumer
 USA Foundation
 Felicia and Kelsey Santiago
 Julia and Jeff Sargent
 Mary and Scott Saville
 Avrum B. and Kimberly A.
 Schonwald Charitable Fund
 Julia Schopp
 Luanne Schultz
 Schwob Family
 Nancy and Ryan Scripps Family
 Carol Seay
 Tamir Segal
 The Sharma Foundation
 Bobbi Shaw
 Catherine and Ken Sheffield
 Camie Shelmire
 Allison Shelton
 Lauren Shelton
 Julie Shrell
 Tinsley Silcox

Mary Ann Siller
 Cindy Simpson
 Melanie Sinclair
 Kyle Sinn
 Gilda Smith
 Iona Smith
 Michael Smith
 Shyra and Howard Smith
 Susan and Jamie Smith
 Timothy Smith
 Rory Soltan
 Kim Somers
 Southwest Funding, LP
 Hearts to Homes Foundation
 Marilyn S. Spencer
 Christy and Larry Spiegel
 Spirit Realty Group
 Gregory Stagaman
 Patty Stahl
 Robert Stalder
 Tim Stearns
 Tongula Steddum
 Dina Steele
 Marquette Stevenson
 Michael Stork
 Renee Strecker
 Shelly Summerour
 Myra and Jerry Sutton
 Catherine Sweet
 Stefanie Taniguchi
 Target Corporation
 Christie Taylor
 Hanna Taylor
 Lauren Taylor
 Seema Tendolkar
 Texas Instruments Employees
 Beth Thoele
 Adrian Thomas

SUPPORTERS

JULY 1, 2021– JUNE 30, 2022

Rochelle Thomas
 Bobette Thompson
 Christy Thompson
 Roslyn Dawson Thompson
 Tito's Handmade Vodka
 John Todd
 Wanda Tooker
 Stephen Toon
 Dennis D. Topletz
 Abigail Erickson-Torres
 Maria E. Torres
 Lauren Trampe
 William B. Travis Academy
 Anh Trinh
 Matthew Tschoegl
 Catherine Turner
 Lisa Umholtz
 United Way of Metropolitan
 Dallas
 Steven Upchurch
 The UPS Store 557
 Michael Valadez
 Valiant Residential
 Lia Van Dril
 Monique Van Hummel
 Ashley Vaughan
 Veritex Bank
 Eric Vidal
 Debra Villarreal
 Valerie Vogel
 Carolyn and Richard Waghorne
 Adrienne and David Wagner
 Walgreens Cash Rewards Program
 Walmart

Stephen Walker
 Jeff Wall
 The Walo Family Fund of
 The Catholic Foundation
 Marion Rhett Walters
 Rick Wang
 Patricia K. Ward
 Vernice Warden
 Jim Warren
 John Watson
 Shannon Watson
 Laurie Watts
 Linda Webb
 Jean White
 Linda White
 Kimberly Whitman
 Shane Williams
 Susan Williams
 Tori and B.G. Willison
 Pat Wilson
 Sandy Wilson
 Alex Winney
 Women of Saint Michael
 Alfred Wood
 Alison Wood
 Delores Wood
 Heather Wood
 Martin Woodall Foundation
 Katherine Wyker
 Lindsey Yarborough
 Yardi
 Sara Yousuf
 Zopolsky & Erdle, LLP

IN KIND DONORS

Anonymous
 Bank of America Employees
 Black New Media
 Nicole Blythe
 Boston Consulting Group
 Cookies by Design
 Cowboys Who Care
 Steve DePaz
 Dezine News Accessories
 Neal Doherty
 James Erwin
 Face Foundation
 Fairmont Hotel Austin
 Gordon Food
 Lindsay Hannah
 Haskel Consulting
 Highland Park High School Students
 Hope Supply
 The Joule Dallas
 Ben E. Keith
 Peja Krstic
 Lakewood Elementary
 LAQ Blocks
 Lisa Libraries
 Martha Lumatete
 Make Ready Experience
 National Charity League Park Cities
 Christina Menendez Pettibone
 Project Linus
 Joe Rose
 Julie Salazar
 Santander Consumer USA employees
 Kendra Scott
 Shaw Diamonds and Design
 Bethany Siggins
 Stafford Smith Employees
 Spanish World School Families
 William B. Travis TAG Academy Families
 US Foods
 Viaduro Wealth and Philanthropic Strategies
 White and Warren
 Woodhouse Day Spa



Board member, and incoming Board Chair, Keith Mankin donated copies of the book he authored called "Grandpa's Bees" in both English and Spanish.



CASE MANAGEMENT SERVICES

EMPOWERING FAMILIES BY BREAKING BARRIERS AND CREATING PATHWAYS TO INCLUSION

Our specialized Case Managers provide individualized strategic intervention and planning designed to promote increased knowledge, skills and behaviors that will enable families with special needs children to manage emergencies, sustain basic needs, achieve their goals, and expand the opportunities for long-term success.

- Focus on building wellness and self-sufficiency
- Explore health insurance options
- Coordinate specialty care if needed
- Education and advocacy
- Emergency financial assistance
- Coordination of therapy services
- Help obtain medical equipment and supplies
- Transition to adulthood services
- Crisis intervention
- Community resources
- Virtual and in-home
- 8 counties in DFW
- Bilingual team
- Offsite services

ELIGIBILITY

Ages 0-21 with special health care need

Health insurance is not required

Those with CHIP and/or private insurance are eligible



SCAN FOR
MORE INFO



CHILD DEVELOPMENT PROGRAM

**EARLY CHILDHOOD EDUCATION,
MEDICALLY-MANAGED CARE,
ONSITE THERAPY AND
SEASONAL CAMPS**

AN INCLUSIVE NATIONALLY-ACCREDITED PROGRAM FOCUSING ON CHILDREN WITH SPECIAL NEEDS.

The Child Development Program for medically-fragile children or those with special needs integrates onsite medically-managed care in an inclusive classroom with an early childhood education curriculum, onsite therapies, and school break programs.

EARLY CHILDHOOD EDUCATION (SCHOOL YEAR):

Children (birth to age five) experience an active learning environment in a developmentally appropriate classroom, weekdays from 7:45 am to 6 pm.

ONSITE THERAPY SERVICES:

The onsite Therapy Program is key to ensuring children with special needs receive the crucial early intervention necessary to improve their life trajectories.

SCHOOL BREAK CAMPS:

We offer STEAM-focused programs during school breaks for ages birth to thirteen.

SLIDING FEE SCALE:

Many students attend free-of-charge.

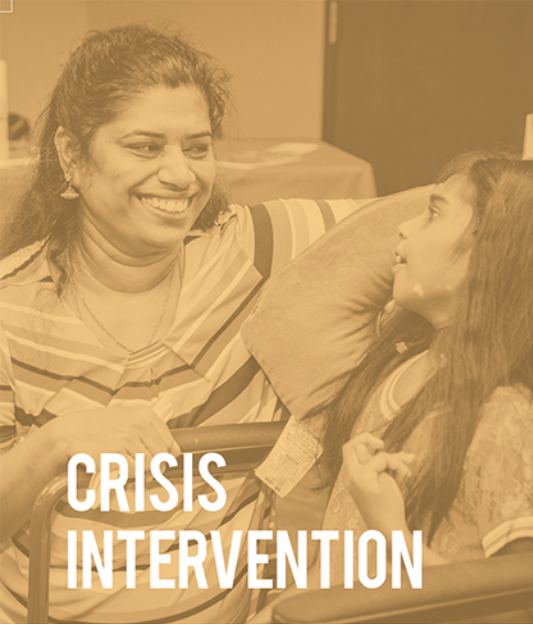
ELIGIBILITY

Children (birth to five years)
with special needs
(school year)

Children (birth to 13 years)
with special needs
(school breaks)



**SCAN FOR
MORE INFO**



**CRISIS
INTERVENTION**



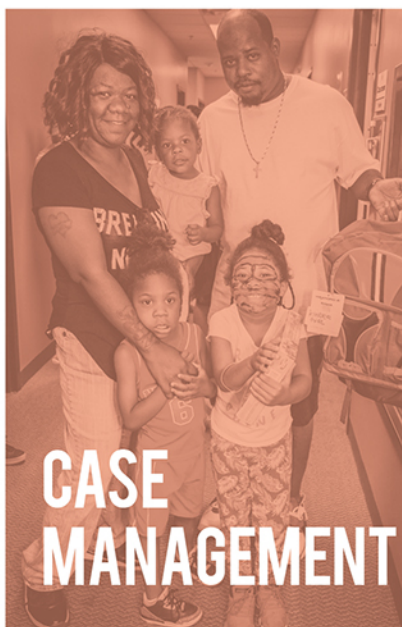
**EARLY CHILDHOOD
EDUCATION**



**CHILD
DEVELOPMENT**



**UNHOUSED
PREVENTION**



**CASE
MANAGEMENT**



**ONSITE
THERAPY**



**FAMILY
SUPPORT**



OUR MISSION:

To provide children with special needs and their families with trusted case management, educational, therapeutic and medically-supported care.



BRYANSHOUSEOA

The 2022 annual report design was made possible by Alyson & Duncan Black with Black New Media **BNM**